

-  4 Bedrooms
-  3.5 Bathrooms
-  2,094 Square Feet



Welcome home to the Longleaf, where functionality and livability combine to create just the home you've been looking for. The 2-car garage leads you right to your drop zone. The kitchen features a large island with sight lines to the breakfast nook and on to the family room. At the front of the home, you'll find a flex room tucked away, perfect for an office, play room, or even a workout space. A deck finishes off the first floor to give you just the space to kick back and relax while enjoying the amazing mountain views. Head on up to the second floor and retreat to your spacious primary bedroom with attached primary bath and large walk-in closet. You'll also find three additional bedrooms (one with it's own private full bath), a full bath in the hall, and laundry.

## Features of this Floorplan

- Sight lines from kitchen to breakfast nook to family room
- First floor flex room with doors
- Second floor primary bedroom with spacious bath and walk-in closet
- Three additional bedrooms, one with its own private bath
- Deck



Craftsman

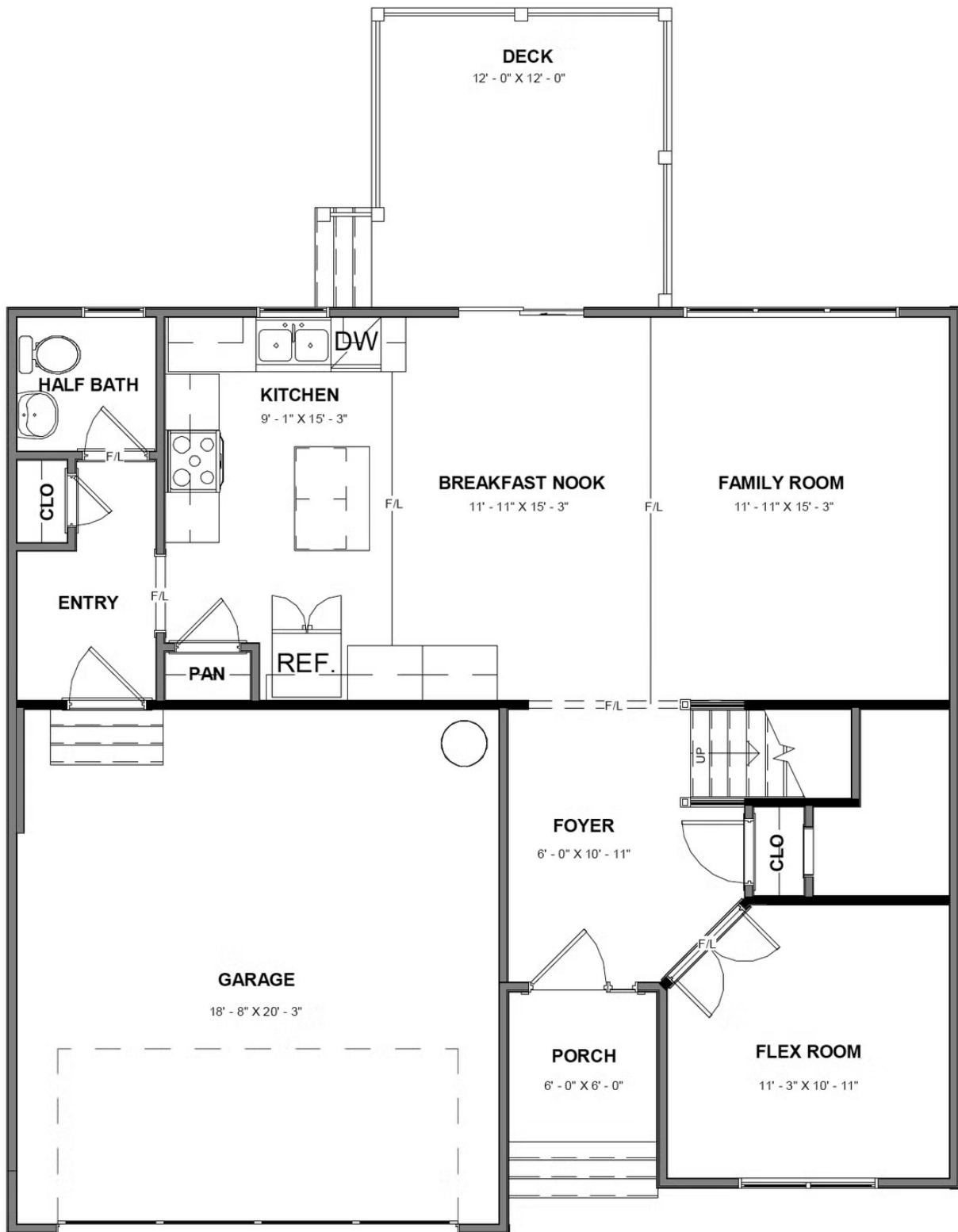


Arts & Crafts



Traditional

## FIRST FLOOR



SECOND FLOOR

