




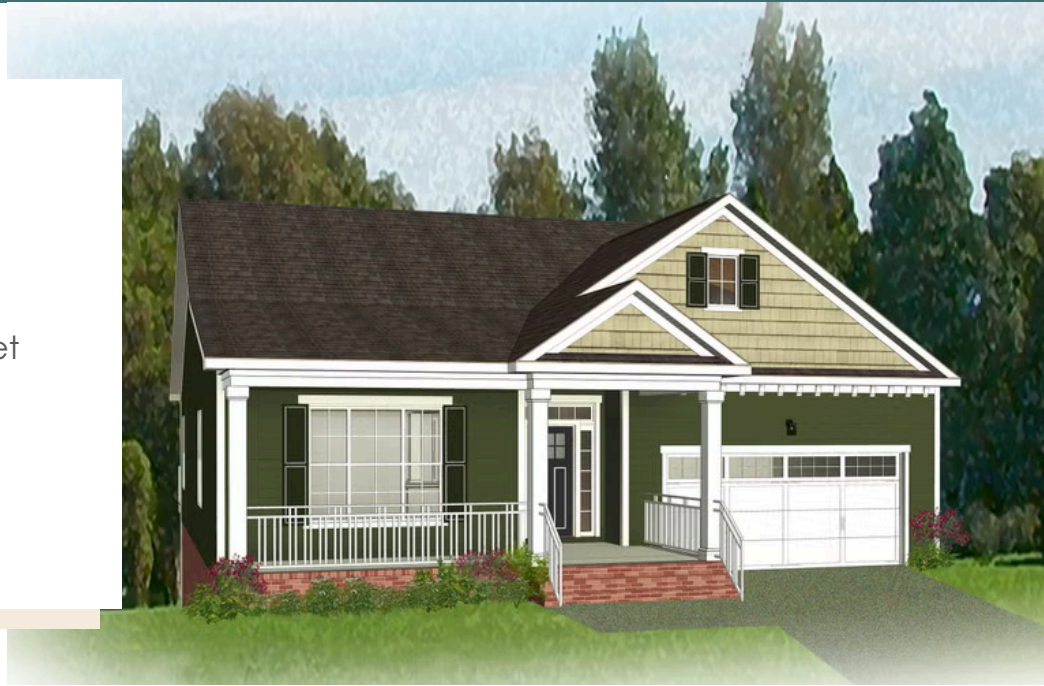


-  3 - 4 Bedrooms
-  2.5 Bathrooms
-  3,044 Square Feet
-  2 Car Garage
-  2 Levels



Styled for living large with room to stretch, the Hartford Terrace is a 2-story plan with 3 bedrooms, 2.5 baths, a 2-car garage, and over 3,000 whopping square feet of space. And open living room and dining room greet you off the foyer and invite you into the flowing heart of the home. Here, a chef's kitchen promises flavorful adventures and a commanding view of the spacious family room and outside world beyond the breakfast nook and back deck.

Feeling sleepy? The main floor primary suite is ready to cradle you in quiet comfort, with a generous pair of walk-in closets and dual-sink bathroom ready for personalization. Head down to the terrace level to enjoy a rec room, two additional bedrooms, and full bath. But wait, there's more—with an expansive unfinished area ready for storage or inspired transformation.

## Features of this Floorplan

- Main level primary bedroom
- Butler's pantry
- Formal dining room
- Living room with option to make it a den or guest bedroom
- Terrace level with rec area and additional bedrooms
- Option for Florida room and/or screened porch
- Option for expanded rec room
- Multiple primary bath layouts



**Traditional**

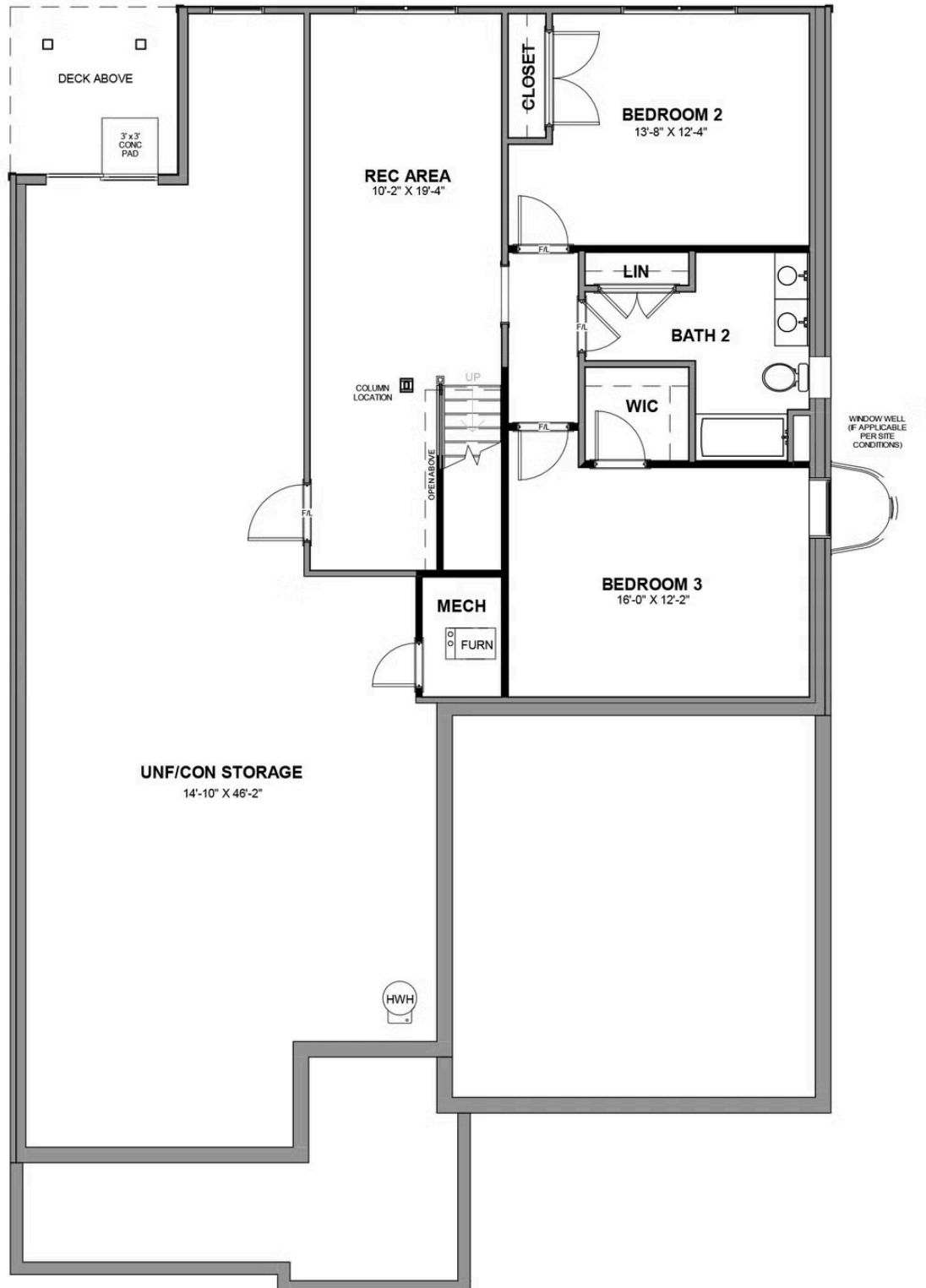


**Craftsman**



**European**

## TERRACE LEVEL



## MAIN LEVEL

