




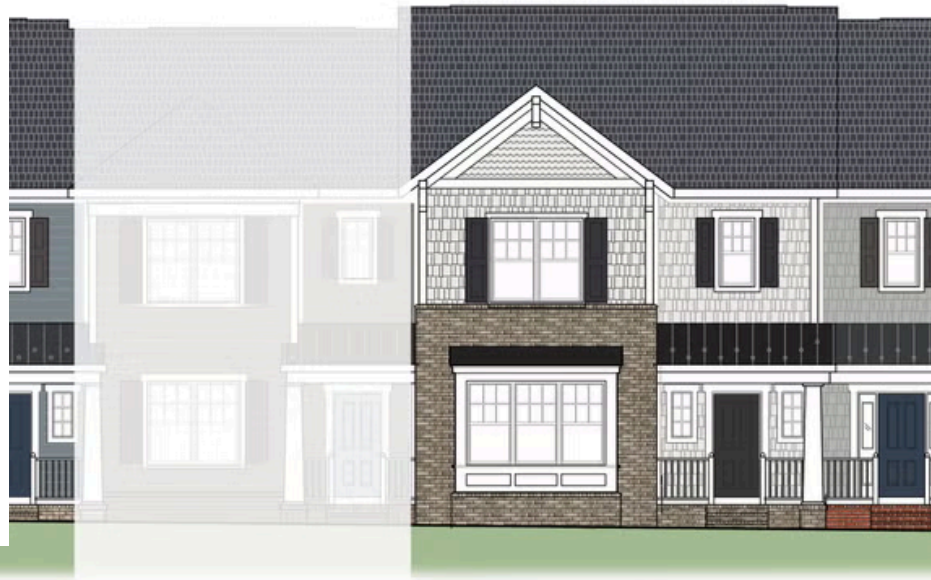


-  3 Bedrooms
-  3.5 Bathrooms
-  2,587 Square Feet
-  2 Car Garage
-  3 Levels



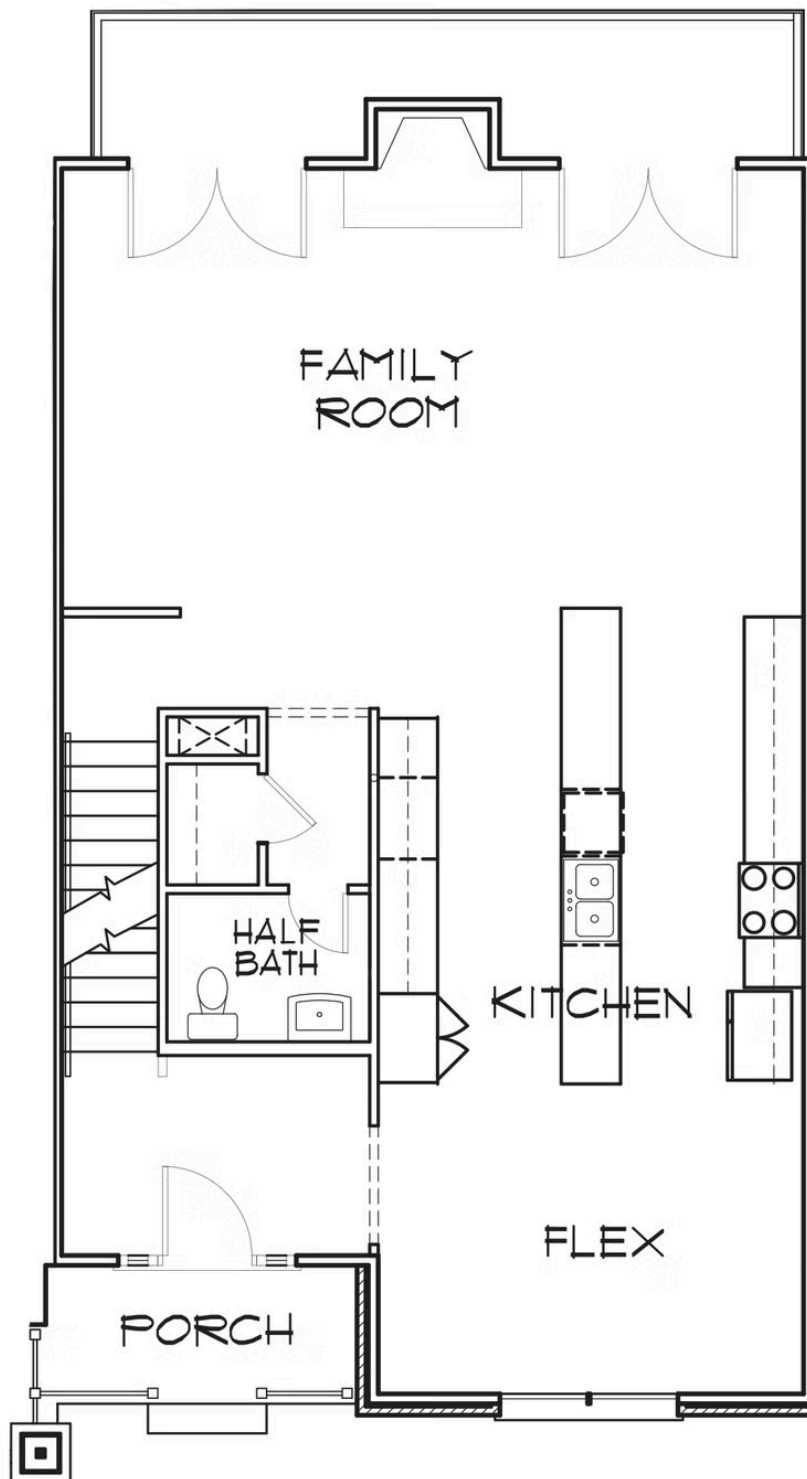
Welcome home to Creek's Edge, a low maintenance townhome community in the heart of Huguenot and situated right near Stony Point Fashion Park. The Creek's Edge B plan is a 3-story townhome that can either be an end or interior unit. A rear load 2-car garage on the basement level leads you into your bonus room and full bath. Head on up to the main level of the home which features a flex space, kitchen with long island and LOTS of cabinet space that overlooks the family room. Head on out to your back deck for some quiet relaxation as you sip your morning coffee or wind down from the day. On the top floor of the townhome you'll find your primary bedroom with spacious primary bath; along with 2 additional bedrooms, full bath, and laundry room for added convenience.

Features of this Floorplan

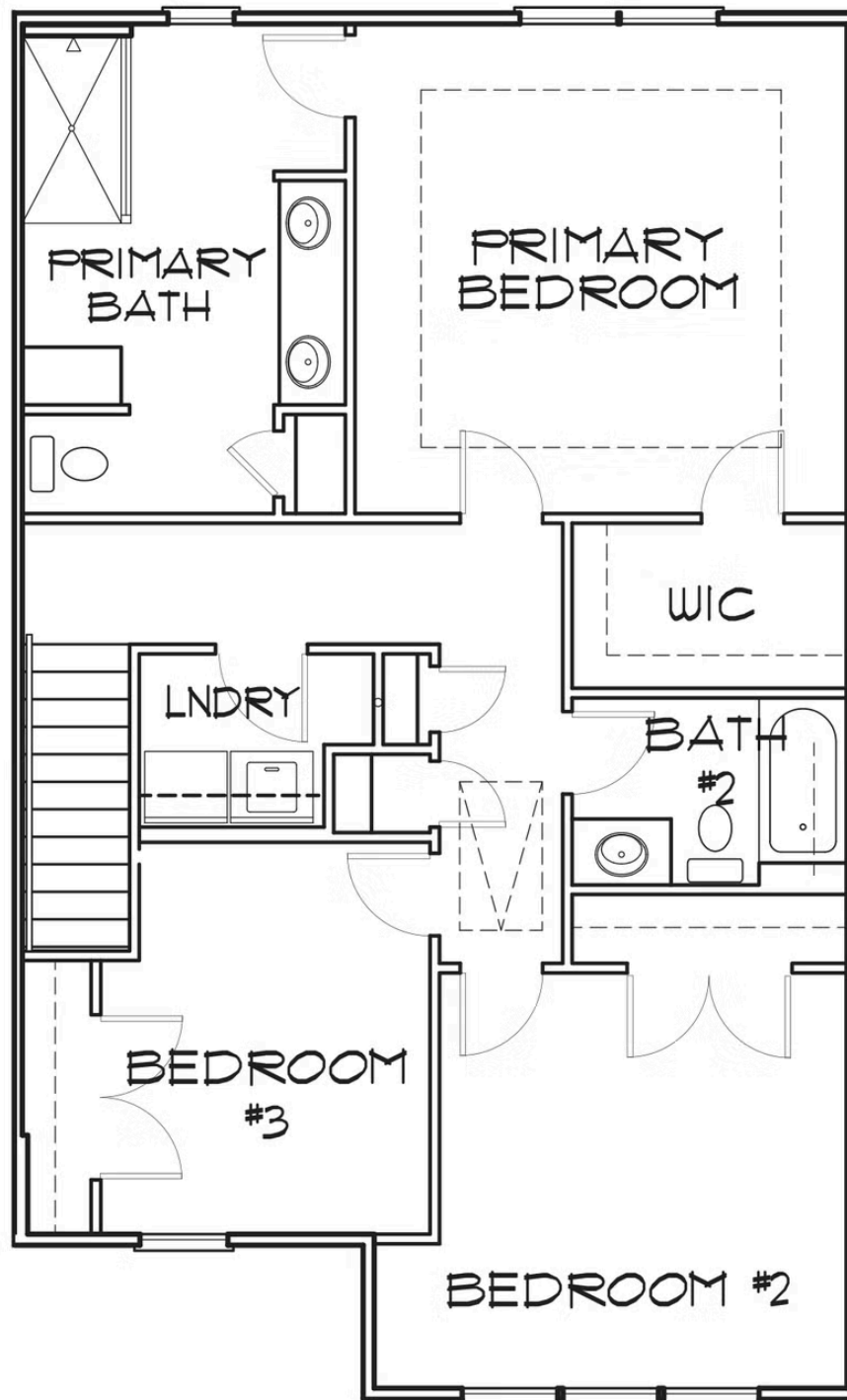
- Kitchen features long island and vast amount of cabinet space
- Primary bedroom retreat with
- Rear load 2-car garage on basement level
- Bonus room and full bath on basement level



FIRST FLOOR



SECOND FLOOR



BASEMENT

