





-  3 - 4 Bedrooms
-  3 Bathrooms
-  2,330 Square Feet
-  2 Levels



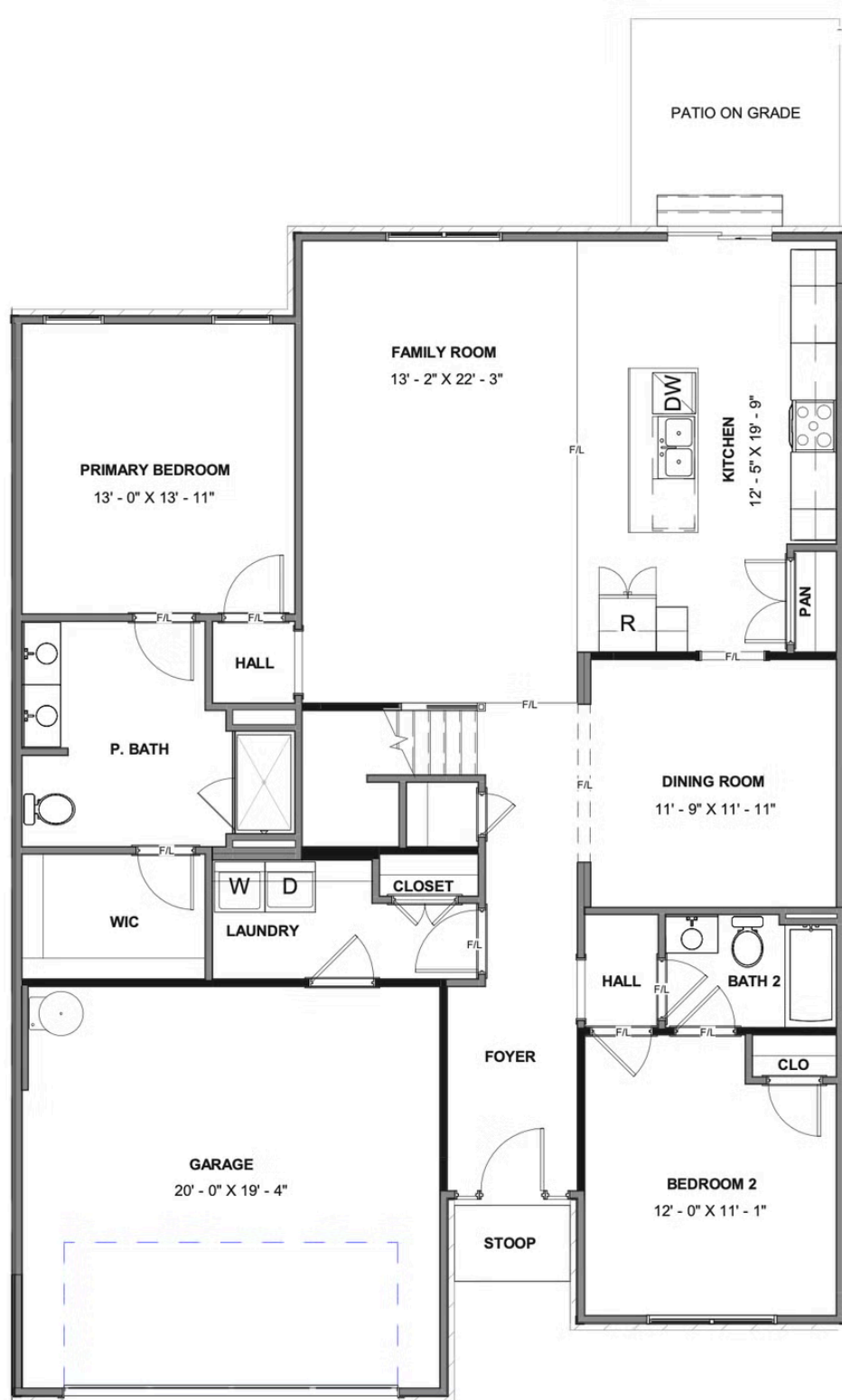
Welcome home to the Brady, a 2-story townhome with 2-car garage and plenty of room to spread out and call your own. Enter through the garage and into your laundry/mud room. The open concept kitchen features a large island overlooking the family room, spacious pantry, and access to the dining room. Tucked off the family room is your primary bedroom retreat with large primary bath and walk-in closet. A second bedroom and full bath can be found at the front of the home. Head on up to your second floor where you'll find a loft, third bedroom with walk-in closet, and full bath.

Features of this Floorplan

- 2-story townhome with 2-car garage
- First floor primary bedroom with spacious primary bath
- Additional bedroom and full bath on first floor
- Second floor features large loft, bedroom, and full bath (option for 2 bedrooms vs large loft)
- Dining room
- Unfinished/conditioned storage on second floor



FIRST FLOOR



SECOND FLOOR

