






-  2 - 3 Bedrooms
-  2.5 Bathrooms
-  1,504 Square Feet
-  1 Car Garage
-  2 Levels



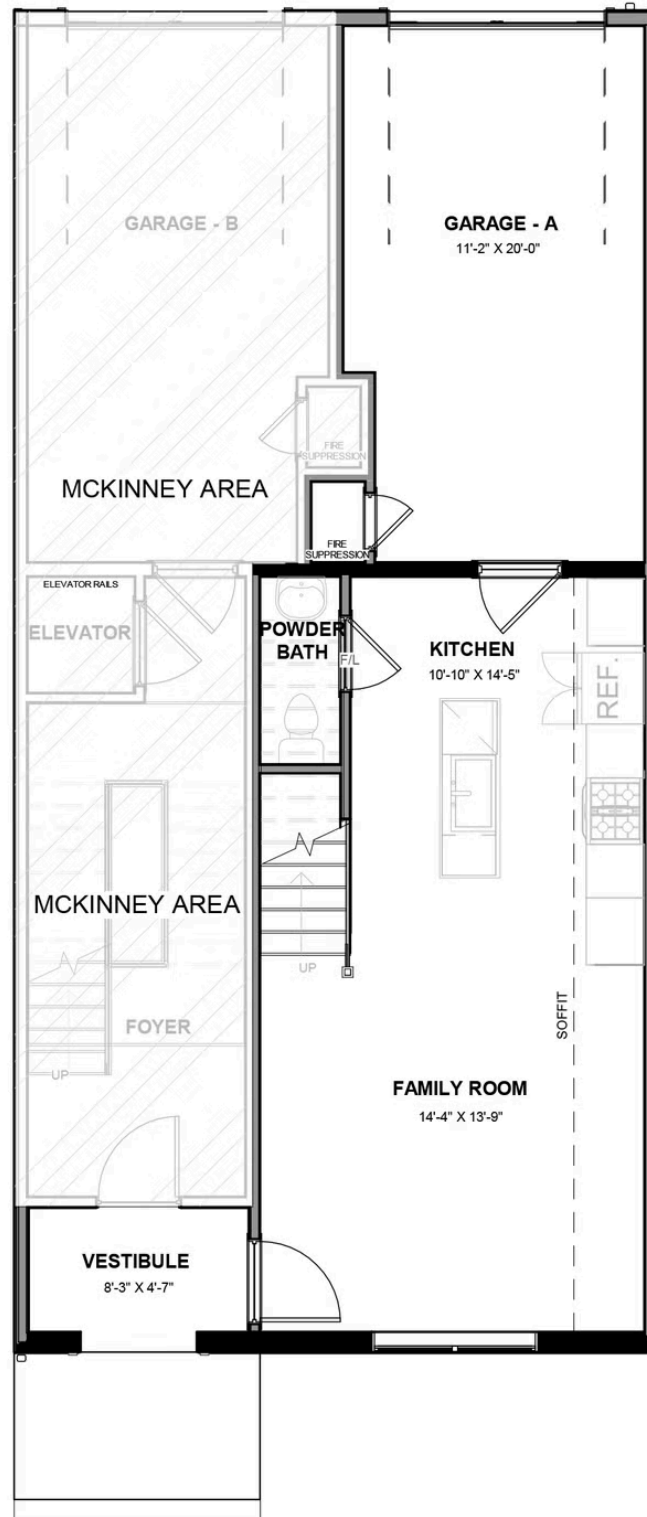
Welcome to modern urban living like never before with the Arlington, a 2-level, 2-bedroom condo offering 1,504 square feet of space. Arrive home to your private 1-car garage and step into a true chef's kitchen and open living room ready for relaxing or entertaining. A half-bath powder room completes the first floor. Step up the open stairwell to the second floor where your primary suite awaits with dual-sink bath and generous walk-in closet. Here you'll also find an additional bedroom, full bath, and laundry, and flexible loft space that leads out to a rear outside deck ready for kicking back and soaking up the good life. Pets are welcome

## Features of this Floorplan

- Loft
- Option for additional bedroom
- Option for spacious deck



## FIRST FLOOR



## SECOND FLOOR

