






THE **Stamford**

AT THE PARKE AT CYPRESS CREEK



-  3 Bedrooms
-  2.5 Bathrooms
-  2,391 Square Feet
-  2 Car Garage
-  2 Levels



From the joys of empty nesting to the pleasures of easy living, it all comes home at Stamford, a 2-story plan featuring 3-bedrooms, 2.5 baths, a 2-car courtyard garage, and over 2,300 square feet. The foyer opens to the heart of the home, a true chef's kitchen ready to whip up a post-round snack or holiday feast with all the trimmings. Not to be outdone, the spacious family room and back patio are made for leisure, with a dining room perfect for meals both formal and relaxed. A large first floor primary suite redefines "roomy" with an equally generous dual-sink bath and walk-in closet. Two additional bedrooms and a full bath await upstairs, while a half bath and laundry room off the garage complete the home. The Stamford offers room for personalization, too, with various layout and amenity options, including a Florida Room or screened porch, added storage, and more.

Features of this Floorplan

- First floor primary bedroom
- 2-car courtyard garage
- Multiple primary bath layouts
- Option for Florida room or screened porch
- Opportunity for pocket office

eagleofva.com

THE **Stamford**

AT THE PARKE AT CYPRESS CREEK



Coastal



Cottage



Craftsman



Farmhouse



Folk Victorian



New England

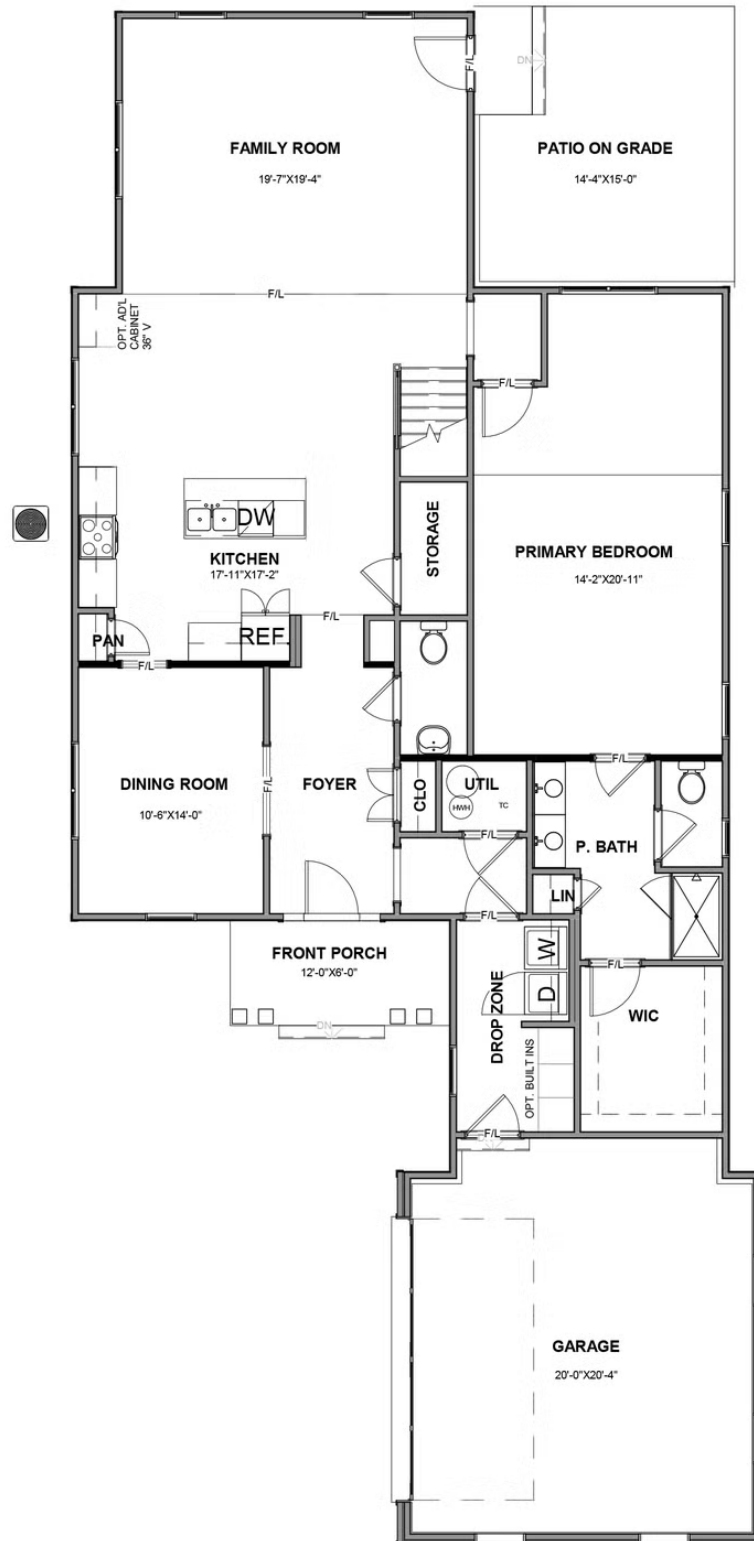
eagleofva.com

This information is deemed reliable but not guaranteed. All details, dimensions, square footage, illustrations and pricing are approximate and may vary from actual plans and specifications. Contact an Eagle Sales Consultant for details. Current information as of 19th May 2024



Traditional7

FIRST FLOOR



SECOND FLOOR

