





113 St. Annes

AT THE PARKE AT CYPRESS CREEK



-  3 Bedrooms
-  2.5 Bathrooms
-  2065 Square Feet
-  2 Car Garage

\$529,900



Celebrate traditions while making new memories at the Acton, a 2-story plan featuring 3-bedrooms, 2.5 baths, a 2-car courtyard garage, and over 2,000 square feet of living space. From the moment you arrive everything simply falls into place with an open, effortless flow that says “aahhh.” Whether catching lunch, a show, or 40 winks on the sofa, life moves at an easy pace within the uninterrupted blend of kitchen, family room, and dining room. A large first floor primary suite redefines “roomy” with an equally spacious Serenity primary bath with enlarged shower and large walk-in closet. Two additional bedrooms and a full bath await upstairs, while a half bath and laundry room off the garage leave nothing to spare.

Features of this Home

- First floor primary bedroom
- Serenity primary bath with enlarged shower
- Screened Porch

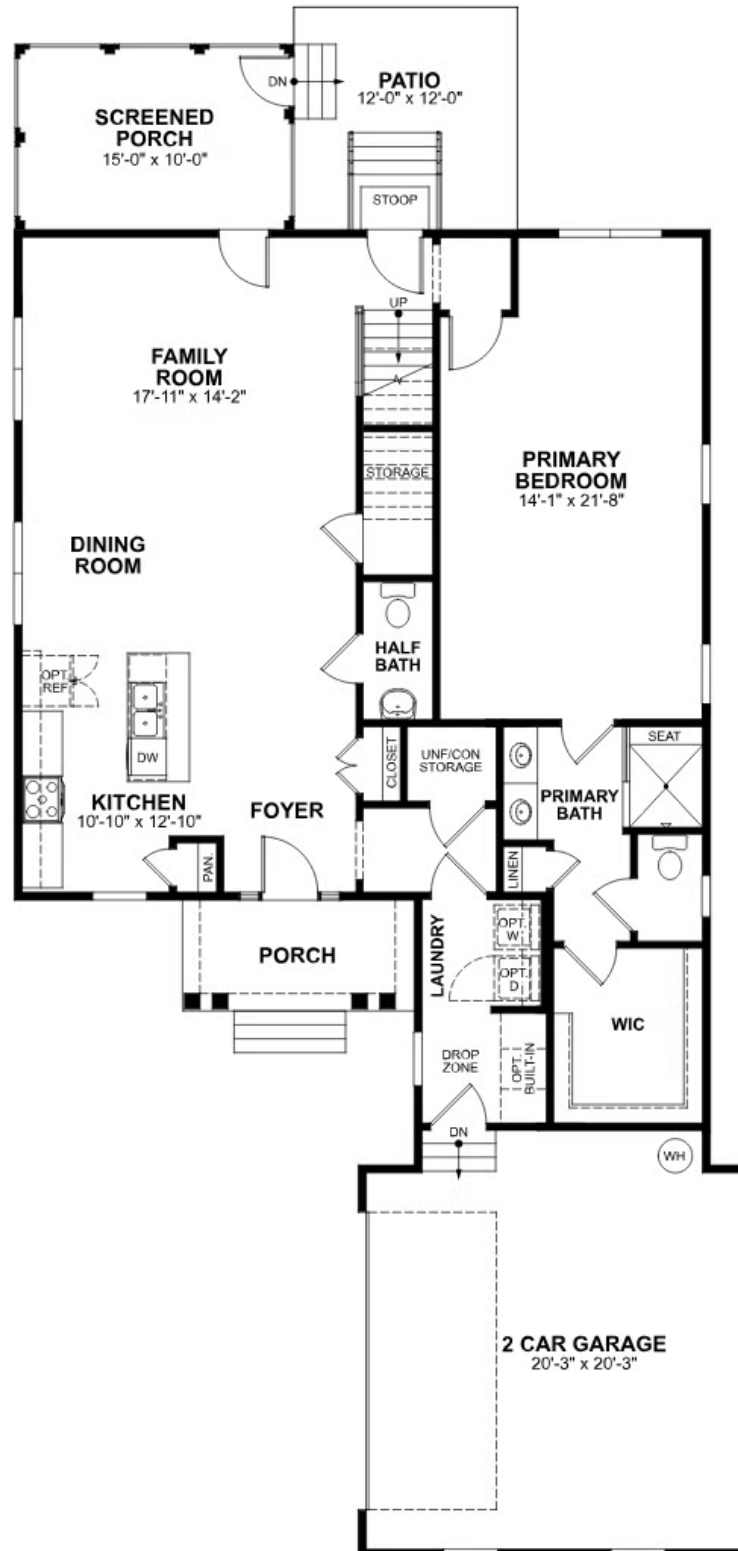
eagleofva.com

113 St. Annes

AT THE PARKE AT CYPRESS CREEK



FIRST FLOOR



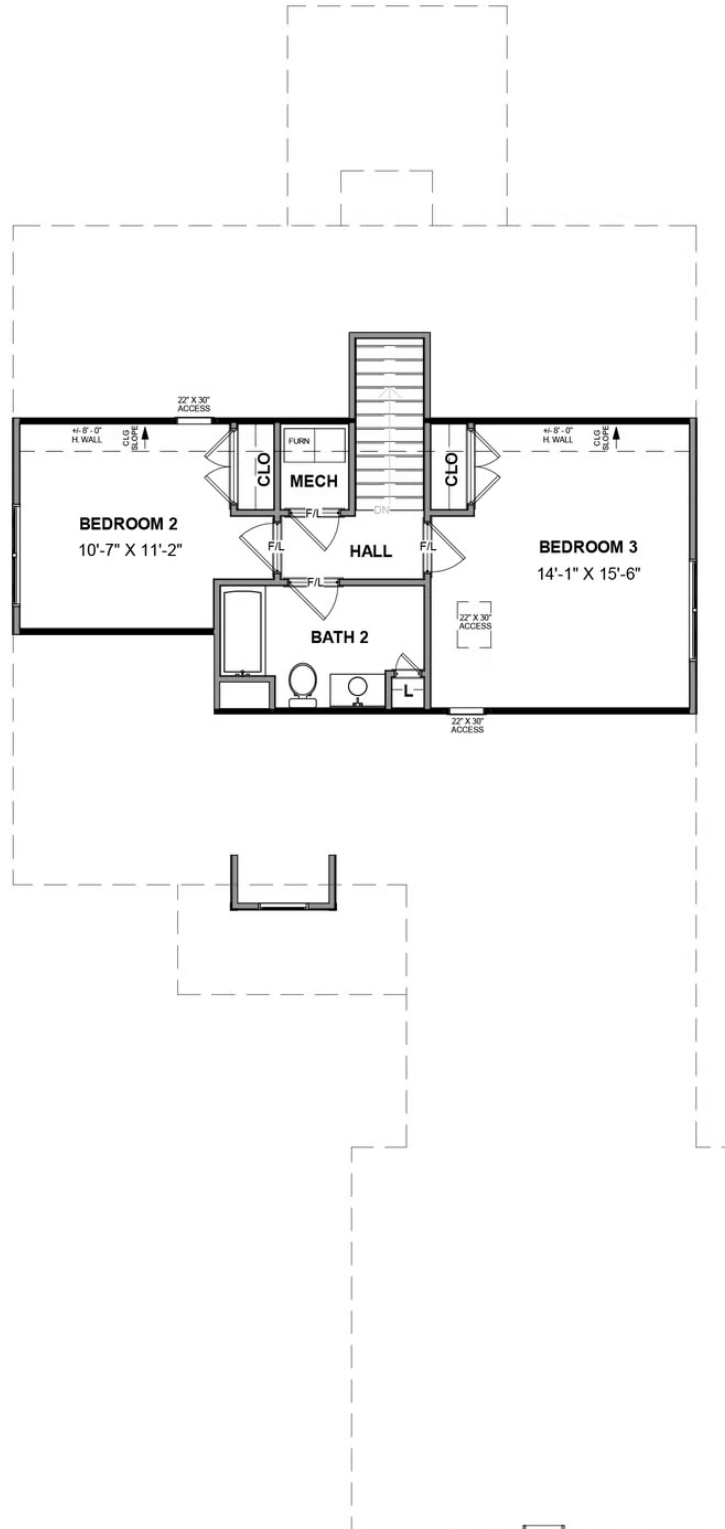
eagleofva.com

113 St. Annes

AT THE PARKE AT CYPRESS CREEK



SECOND FLOOR



eagleofva.com