





408 W. 6th Street #10

AT MCRAE & LACY



-  3 Bedrooms
-  3.5 Bathrooms
-  2700 Square Feet
-  2 Car Garage

\$859,000



The Laurel is a 3-story townhome with plenty of opportunity to personalize this new home floor plan to fit your lifestyle. On the first floor you will find your 2-car rear load garage that leads you to a bedroom with full bath. Head on up to the second floor featuring your spacious primary bedroom and bathroom, as well as an additional bedroom with full bath and a sitting room. A laundry room can be found on this floor for added convenience. Head on up to the third floor and discover your Kitchen with a huge island that opens up right to the Family Room with fireplace and Dining Room. A Nanawall will lead you to your outdoor terrace on the third floor...here you can kick off your day with a cup of coffee, or perhaps start your evening with appetizers and drinks, while enjoying the beautiful views of the river and city!

Features of this Home

- Alternate Kitchen layout
- NanaWall leading to outdoor terrace
- Elevator
- Fireplace in family room
- Amazing views of the James River and Richmond skyline

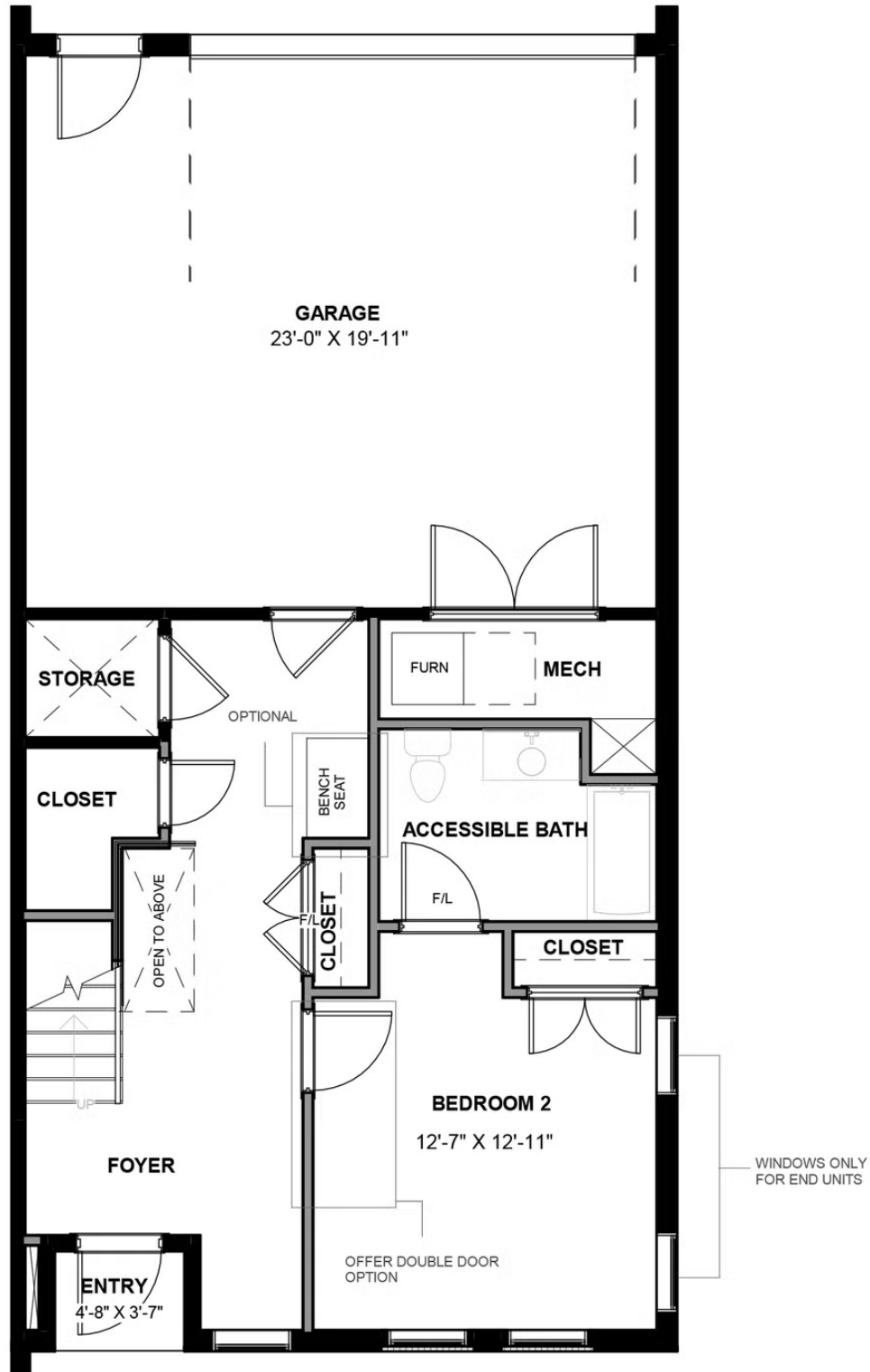
eagleofva.com

408 W. 6th Street #10

AT MCRAE & LACY



FIRST FLOOR



eagleofva.com

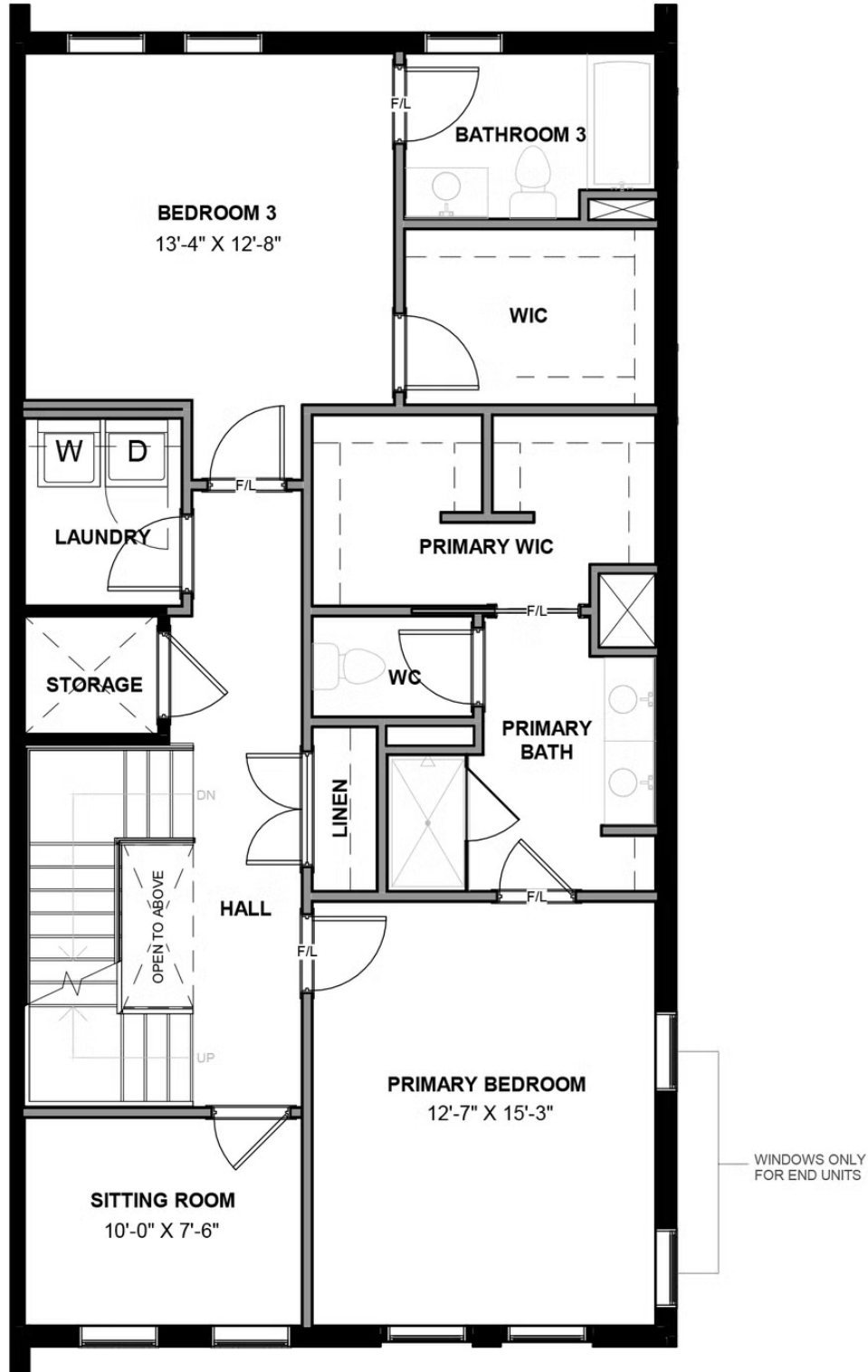
This information is deemed reliable but not guaranteed. All details, dimensions, square footage, illustrations and pricing are approximate and may vary from actual plans and specifications. Contact an Eagle Sales Consultant for details. Current information as of 9th May 2024

408 W. 6th Street #10

AT MCRAE & LACY



SECOND FLOOR



eagleofva.com

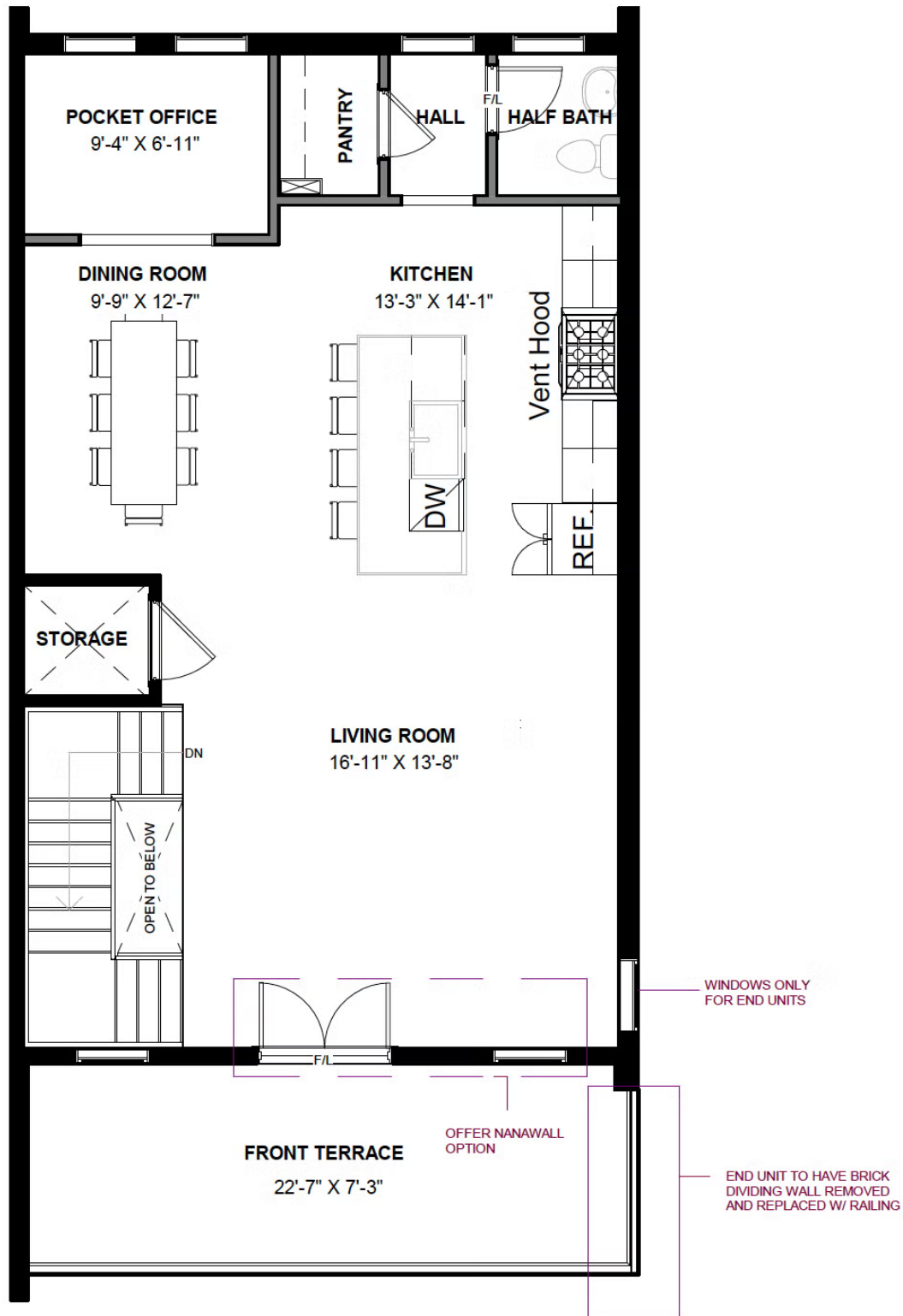
This information is deemed reliable but not guaranteed. All details, dimensions, square footage, illustrations and pricing are approximate and may vary from actual plans and specifications. Contact an Eagle Sales Consultant for details. Current information as of 9th May 2024

408 W. 6th Street #10

AT MCRAE & LACY



THIRD FLOOR



eagleofva.com