





# 17 Foushee Mews Walk #20

AT FOUSHEE MEWS



-  4 Bedrooms
-  4.5 Bathrooms
-  3533 Square Feet
-  2 Car Garage

**\$999,990**



The townhome other homes dream of, the Malvern redefines spaciousness with a multi-level flow teeming with exquisite craftsmanship, authentic details, and flair for modern urban-style living. Offering the end unit benefits of additional windows and natural light, the Malvern has distinctive curb appeal. A 2-car garage welcomes you to the ground floor foyer with bedroom and full bath. A personal elevator has been added for your convenience as well. The second level is first class when it comes to relaxing and entertaining, with its masterful flow from dining room to kitchen to family room with fireplace. Move up to the third floor and the comforts of your primary suite with luxurious ultimate primary bath and large walk-in closet. A second primary bedroom with full bath, as well as laundry also call this floor home. The fourth floor will quickly become your favorite with its large media room and amazing covered rooftop terrace. Your NanaWall accordion door will lead you outside so you can kick back by the brick fireplace for year-round relaxation. A third bedroom and full bath completes the top floor.

## Features of this Home

- End unit townhome in the heart of Richmond
- Personal elevator
- Dual primary suites with Ultimate primary bath
- NanaWall leading out to your fourth floor covered terrace with brick fireplace
- Rear load 2-car garage
- Fireplace in family room
- HD video package in family room and outdoor terrace

[eagleofva.com](http://eagleofva.com)

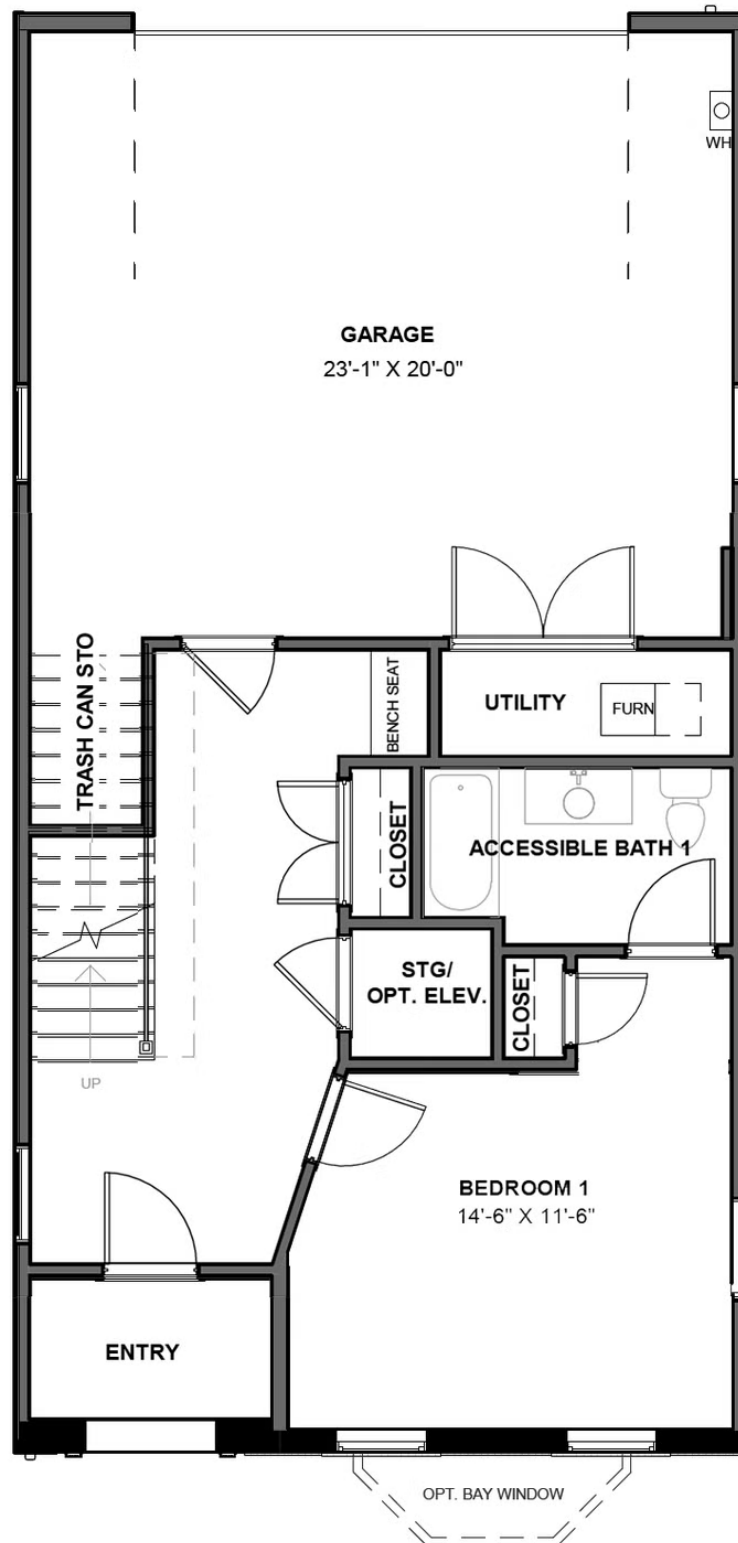
This information is deemed reliable but not guaranteed. All details, dimensions, square footage, illustrations and pricing are approximate and may vary from actual plans and specifications. Contact an Eagle Sales Consultant for details. Current information as of 12th May 2024

# 17 Foushee Mews Walk #20

AT FOUSHEE MEWS



## FIRST FLOOR



eagleofva.com

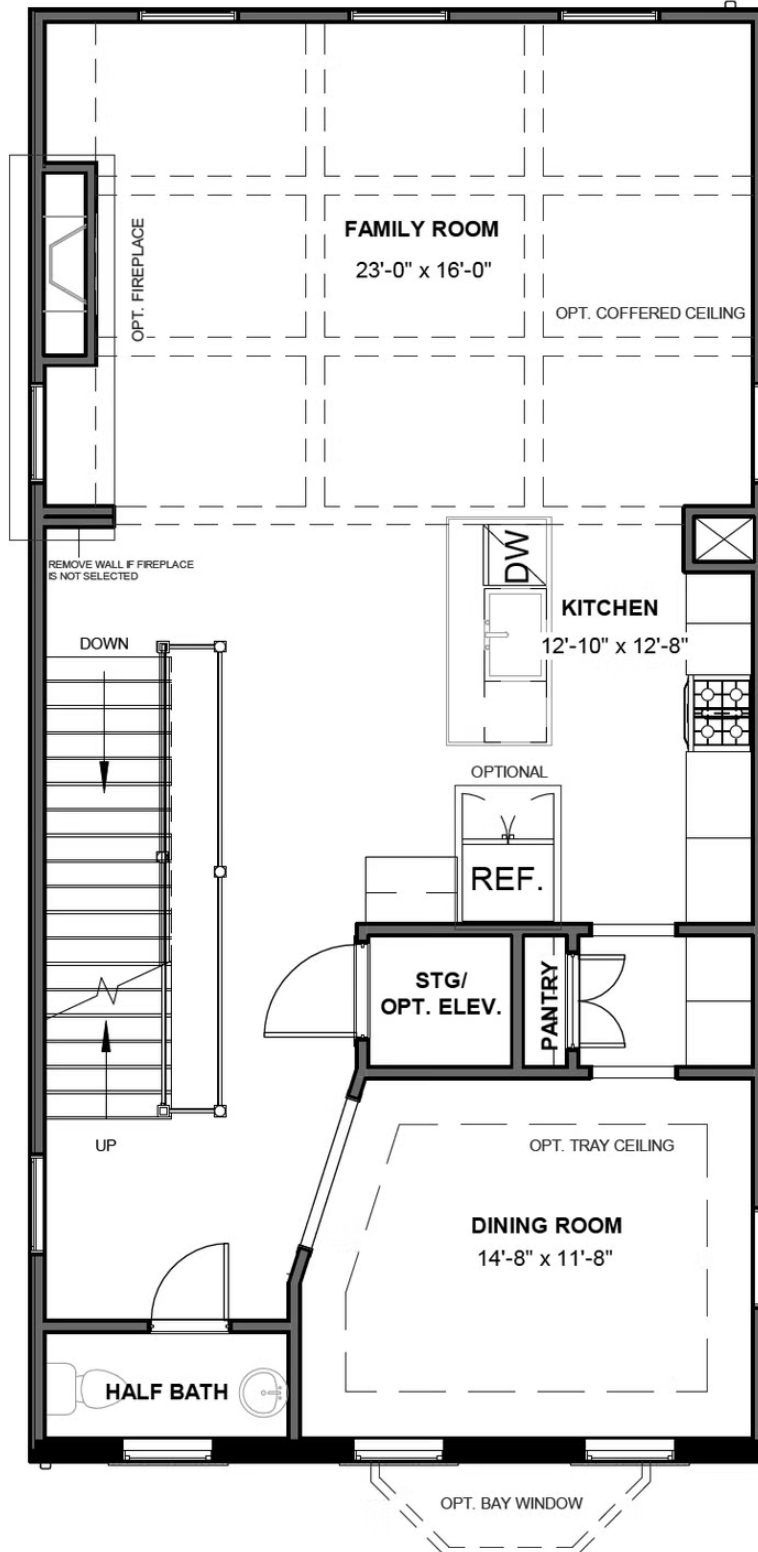
This information is deemed reliable but not guaranteed. All details, dimensions, square footage, illustrations and pricing are approximate and may vary from actual plans and specifications. Contact an Eagle Sales Consultant for details. Current information as of 12th May 2024

# 17 Foushee Mews Walk #20

AT FOUSHEE MEWS



## SECOND FLOOR



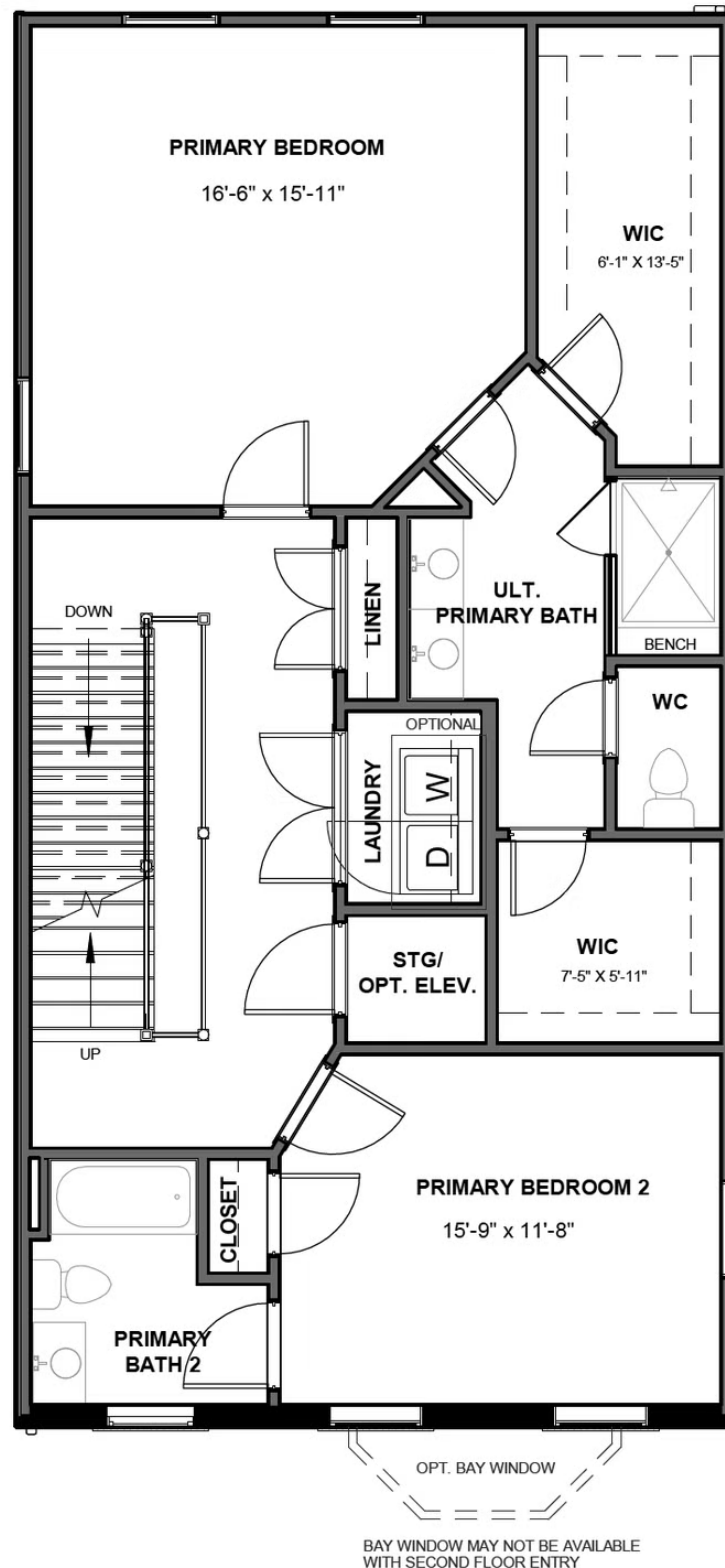
eagleofva.com

# 17 Foushee Mews Walk #20

AT FOUSHEE MEWS



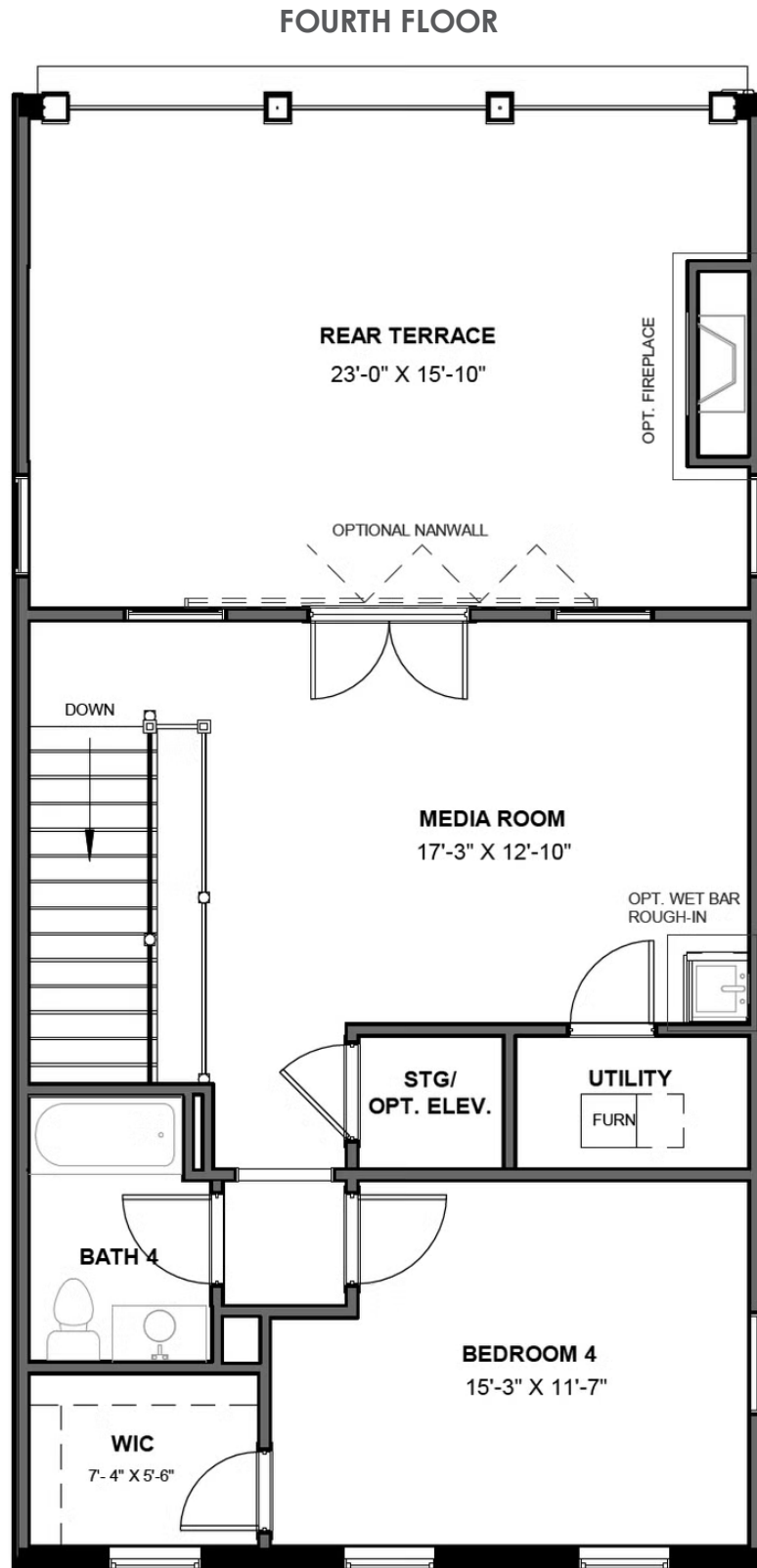
## THIRD FLOOR



eagleofva.com

# 17 Foushee Mews Walk #20

AT FOUSHEE MEWS



[eagleofva.com](http://eagleofva.com)

This information is deemed reliable but not guaranteed. All details, dimensions, square footage, illustrations and pricing are approximate and may vary from actual plans and specifications. Contact an Eagle Sales Consultant for details. Current information as of 12th May 2024