





# 9445 Creek Summit Circle #10

AT CREEK'S EDGE AT STONY POINT



-  3 Bedrooms
-  3.5 Bathrooms
-  2587 Square Feet
-  2 Car Garage

**\$609,980**



This spacious 3-story townhome gives you room to spread out and the chance to still personalize your home to match your lifestyle! Featuring 3 bedrooms, 3.5 baths, and over 2,500 square feet, you'll feel right at home at Creek's Edge. The rear load 2-car garage features a pedestrian door and leads you into the basement level with bonus room and full bath/closet. You can make this space an additional guest bedroom, workout room, office...the possibilities are endless. Make your way to the main level where you will find a Kitchen with expansive island, tons of cabinet space, and a view right into the family room. Off the family room are two sets of double doors leading you to your rear deck, and a flex space at the front completes the floor. On the third floor you'll find your primary bedroom with walk-in closet and large primary bath, as well as two additional bedrooms and full bath. A laundry room completes the space for added convenience.

## Features of this Home

- Rear load 2-car garage
- First floor (basement level) bedroom and full bath
- Two sets of double doors to rear deck on main level
- Pedestrian door to garage
- Ample amount of kitchen cabinet storage

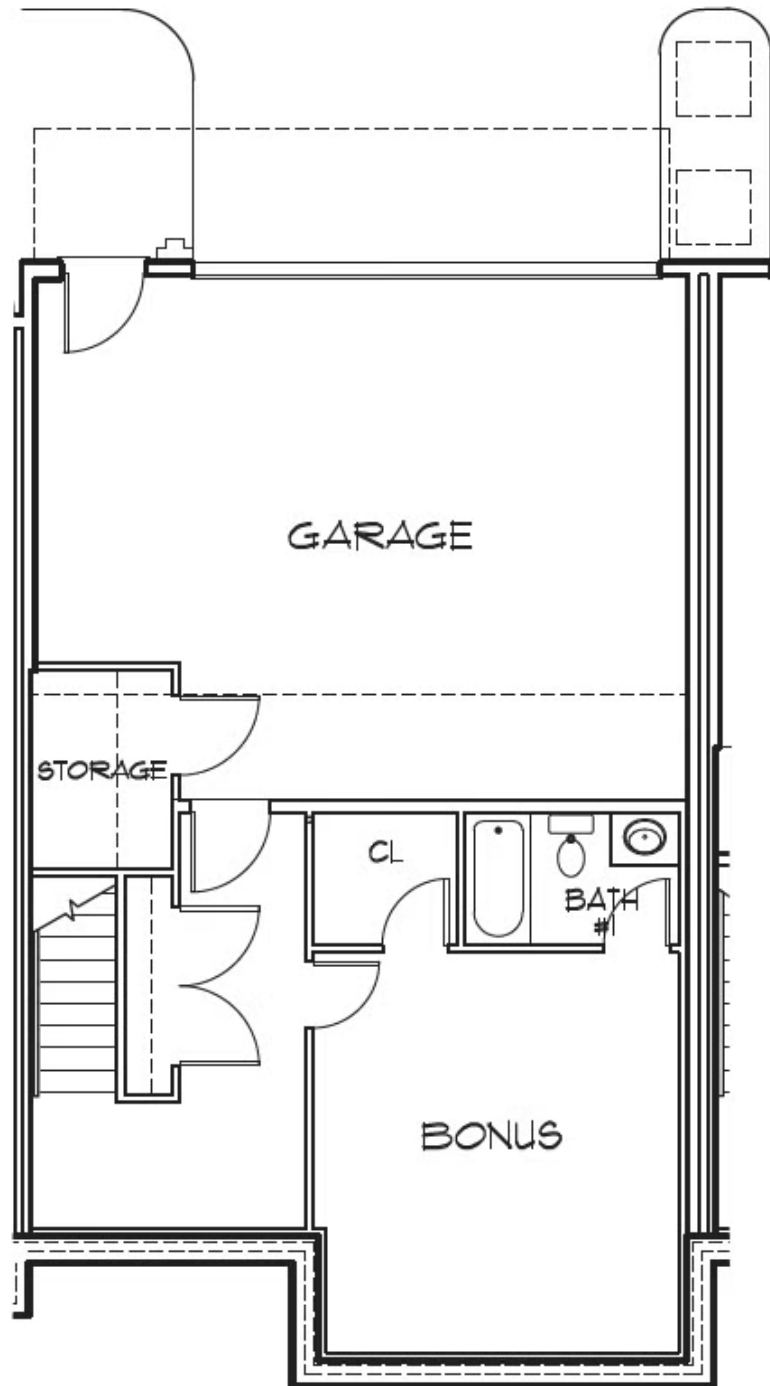
[eagleofva.com](http://eagleofva.com)

# 9445 Creek Summit Circle #10

AT CREEK'S EDGE AT STONY POINT



## BASEMENT



[eagleofva.com](http://eagleofva.com)

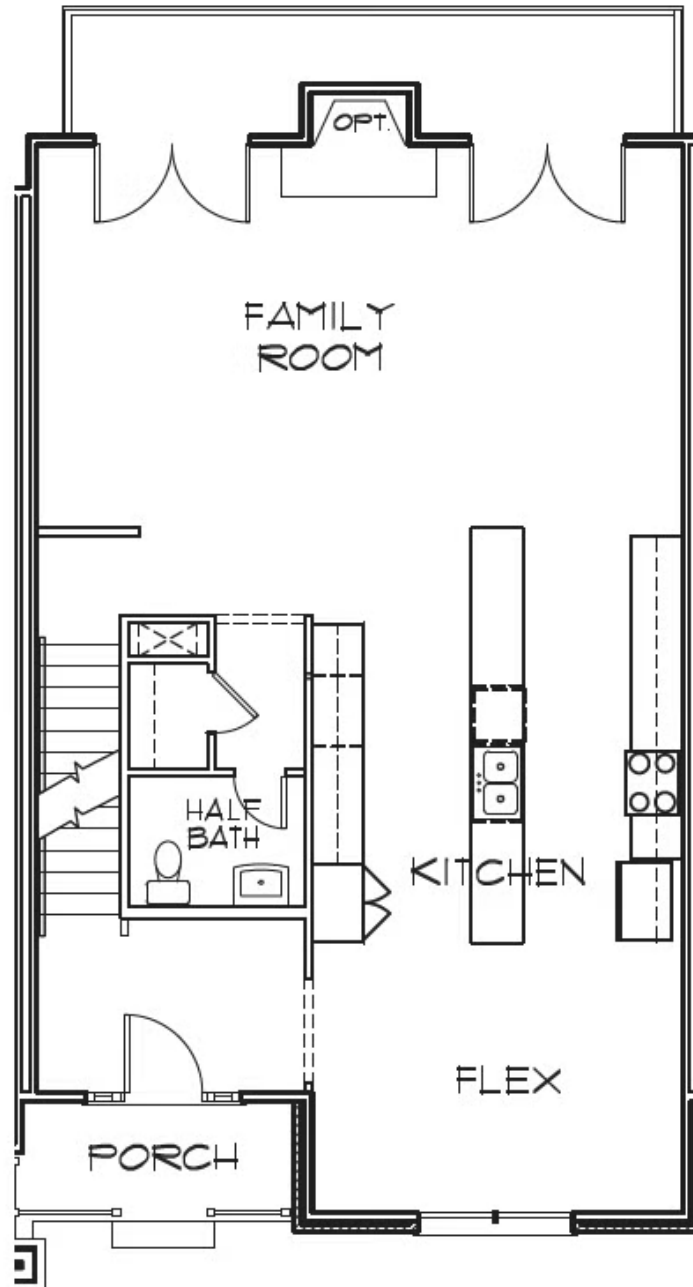
This information is deemed reliable but not guaranteed. All details, dimensions, square footage, illustrations and pricing are approximate and may vary from actual plans and specifications. Contact an Eagle Sales Consultant for details. Current information as of 12th May 2024

# 9445 Creek Summit Circle #10

AT CREEK'S EDGE AT STONY POINT



## FIRST FLOOR



[eagleofva.com](http://eagleofva.com)

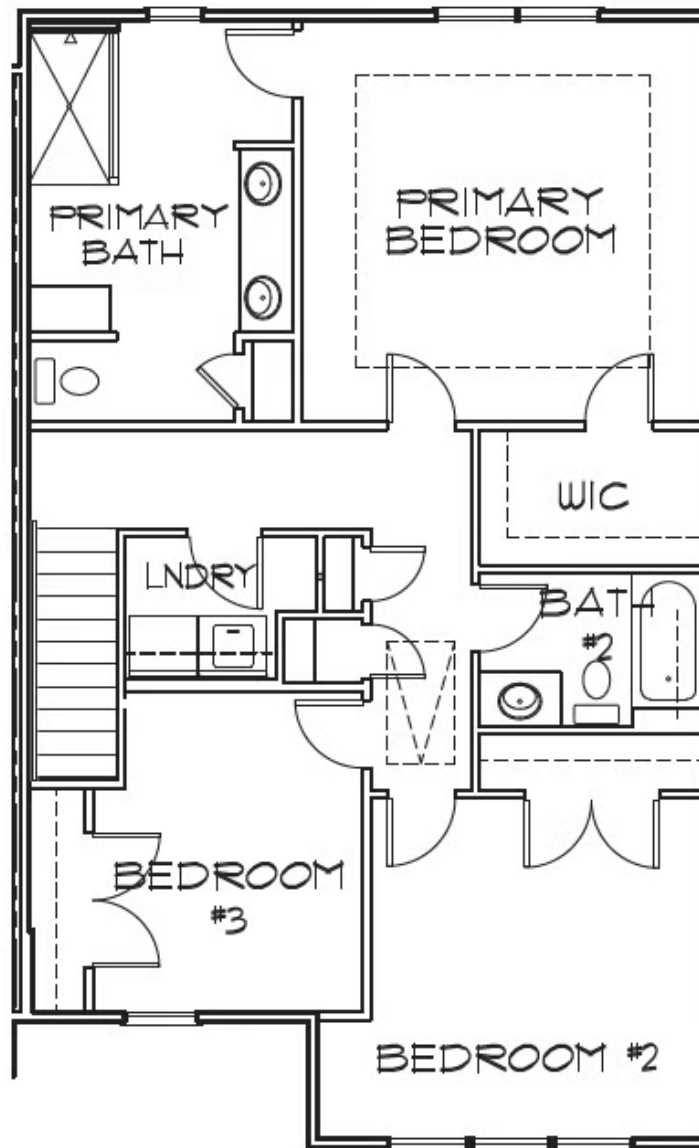
This information is deemed reliable but not guaranteed. All details, dimensions, square footage, illustrations and pricing are approximate and may vary from actual plans and specifications. Contact an Eagle Sales Consultant for details. Current information as of 12th May 2024

# 9445 Creek Summit Circle #10

AT CREEK'S EDGE AT STONY POINT



## SECOND FLOOR



[eagleofva.com](http://eagleofva.com)

This information is deemed reliable but not guaranteed. All details, dimensions, square footage, illustrations and pricing are approximate and may vary from actual plans and specifications. Contact an Eagle Sales Consultant for details. Current information as of 12th May 2024