






THE Corvallis

AT READERS BRANCH SINGLE FAMILY HOMES



-  3 - 5 Bedrooms
-  2 - 3 Bathrooms
-  2,106 Square Feet
-  2 Car Garage
-  1 Levels



Taking single-level living to the next level of style, the Corvallis offers 3 bedrooms, 2 full baths, a 2-car garage, and over 2,000 square feet of space. You'll feel right at home in the expansive, easy-flowing design blending both modern kitchen and family room into a centerpiece for contemporary living. After the day, escape to your primary bedroom oasis, complete with a dual-sink bath and cavernous walk-in closet. Two additional bedrooms and a central laundry room complete the plan. Packed with features and built for flexibility, the Corvallis can be personalized to your needs, with options for a second floor, a pocket office, morning room, screen porch, and more.

Features of this Floorplan

- One level living
- Option for second floor loft, bedrooms, and/or unfinished storage
- Option for morning room
- Option for screened porch or lanai
- Multiple primary bath configurations
- Den or formal dining room options

eagleofva.com

THE Corvallis

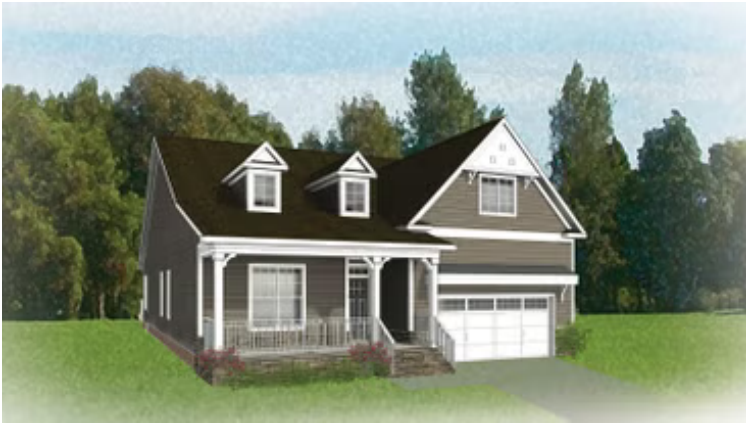
AT READERS BRANCH SINGLE FAMILY HOMES



Colonial



Craftsman



European



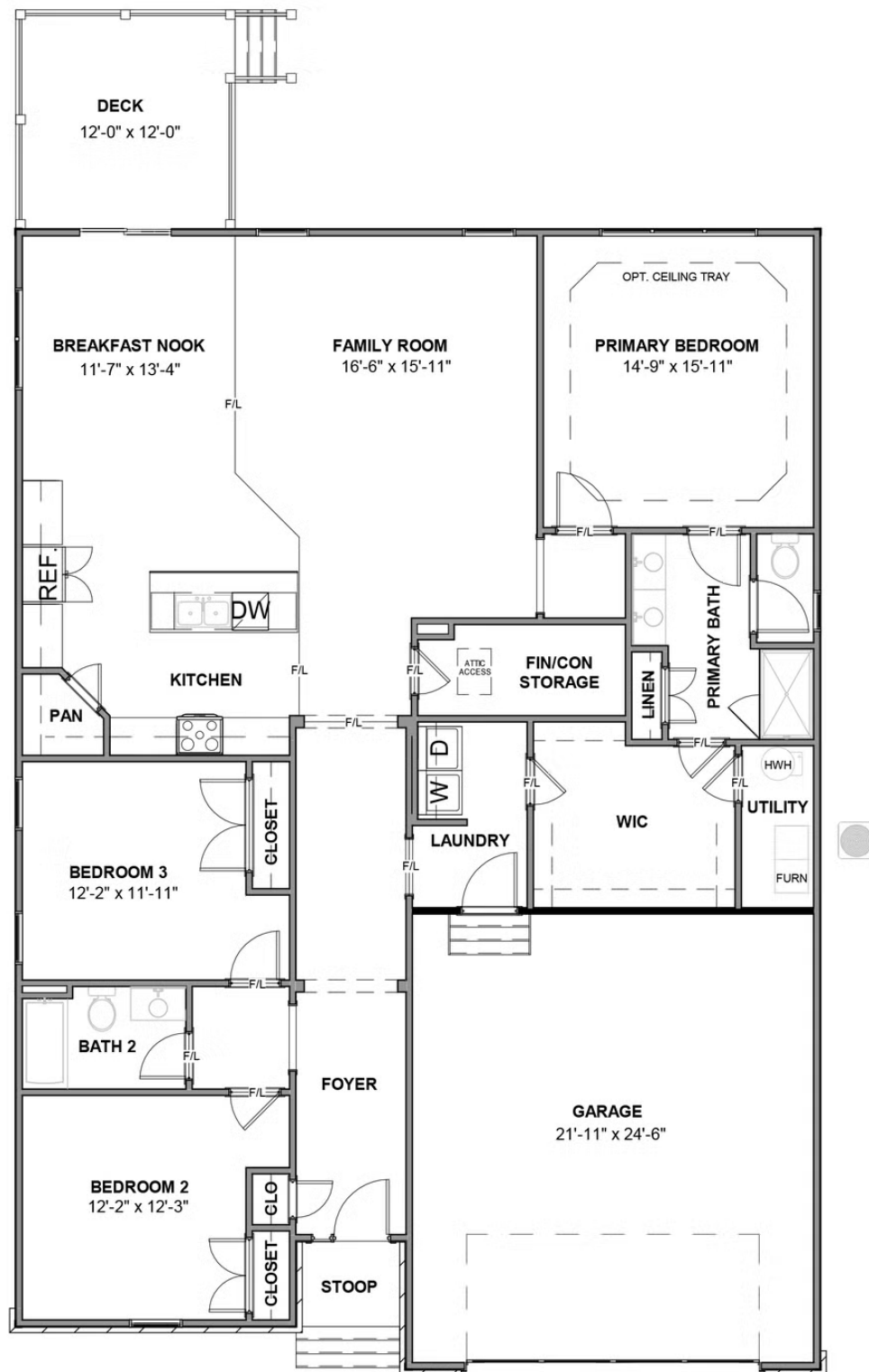
Traditional

eagleofva.com

This information is deemed reliable but not guaranteed. All details, dimensions, square footage, illustrations and pricing are approximate and may vary from actual plans and specifications. Contact an Eagle Sales Consultant for details. Current information as of 16th May 2024

THE Corvallis

AT READERS BRANCH SINGLE FAMILY HOMES



eagleofva.com