





12437 Leith Hill Circle

AT READERS BRANCH SINGLE FAMILY HOMES



-  3 Bedrooms
-  2.5 Bathrooms
-  3390 Square Feet
-  2 Car Garage

\$879,000



Think you've seen it all? Then you haven't seen Linden Terrace, a 2-story plan with 3 bedrooms, 2.5 baths, a 2-car garage, and 3,390 glorious square feet of pure home happiness. A front porch made for sipping lemonade and social graces welcomes you inside to a chef's dream kitchen offering a scenic vista overlooking both breakfast nook and family room with fireplace. A formal dining room and home study lend sophistication and flexibility, while a secluded first floor primary suite with large walk-in closet and Serenity primary bath offer a quiet escape. Step downstairs to the terrace level where an expanded rec room, full bath, and two additional bedrooms blend playfulness, with easygoing comfort and everyday livability—while a huge unfinished storage area is ready for whatever you can imagine.

Features of this Home

- Main level primary bedroom with Serenity primary bath and bench seat in shower
- Screened porch
- Fireplace in family room
- Pocket office
- Expanded rec room in basement

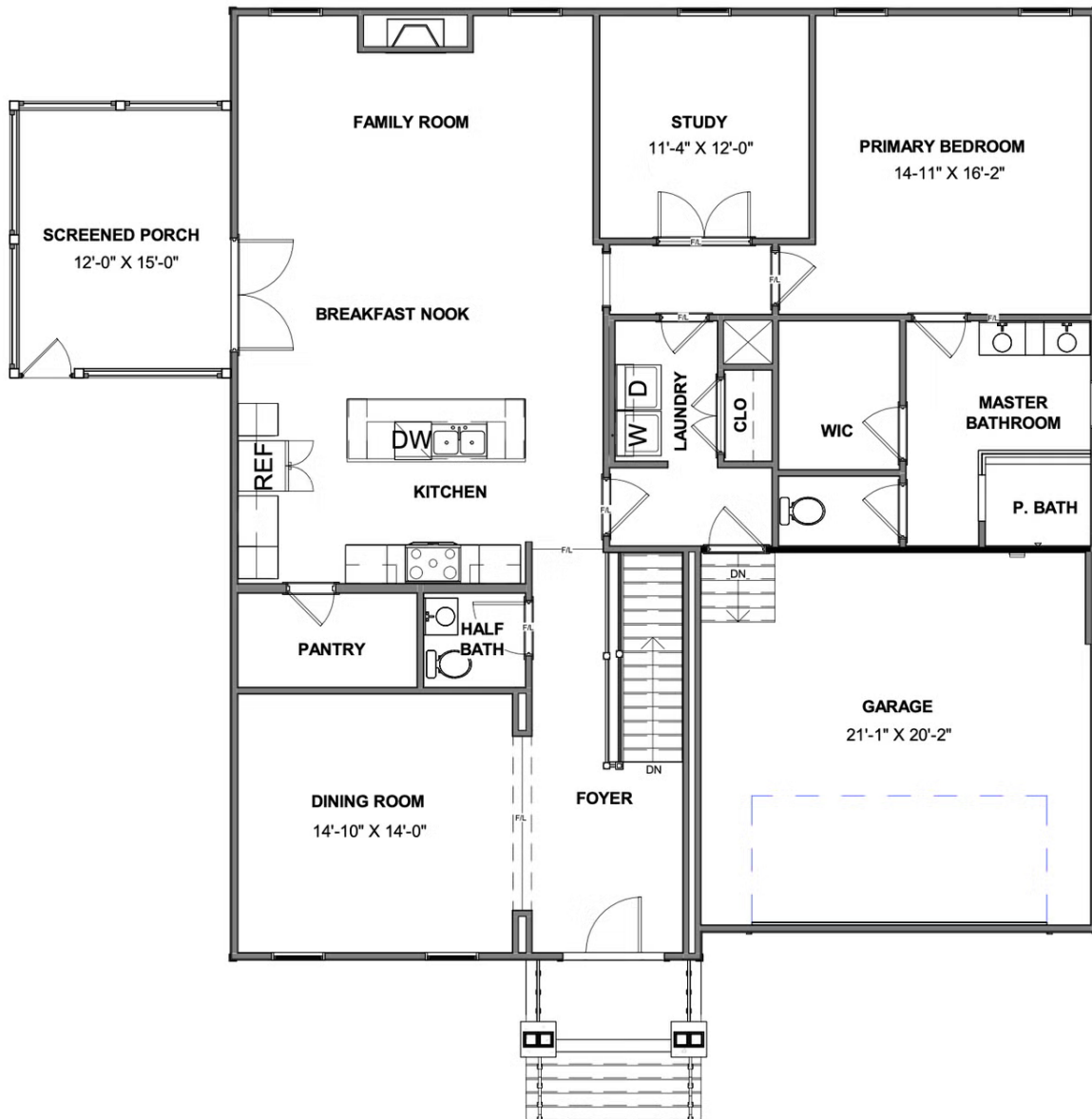
eagleofva.com

12437 Leith Hill Circle

AT READERS BRANCH SINGLE FAMILY HOMES



MAIN LEVEL



eagleofva.com

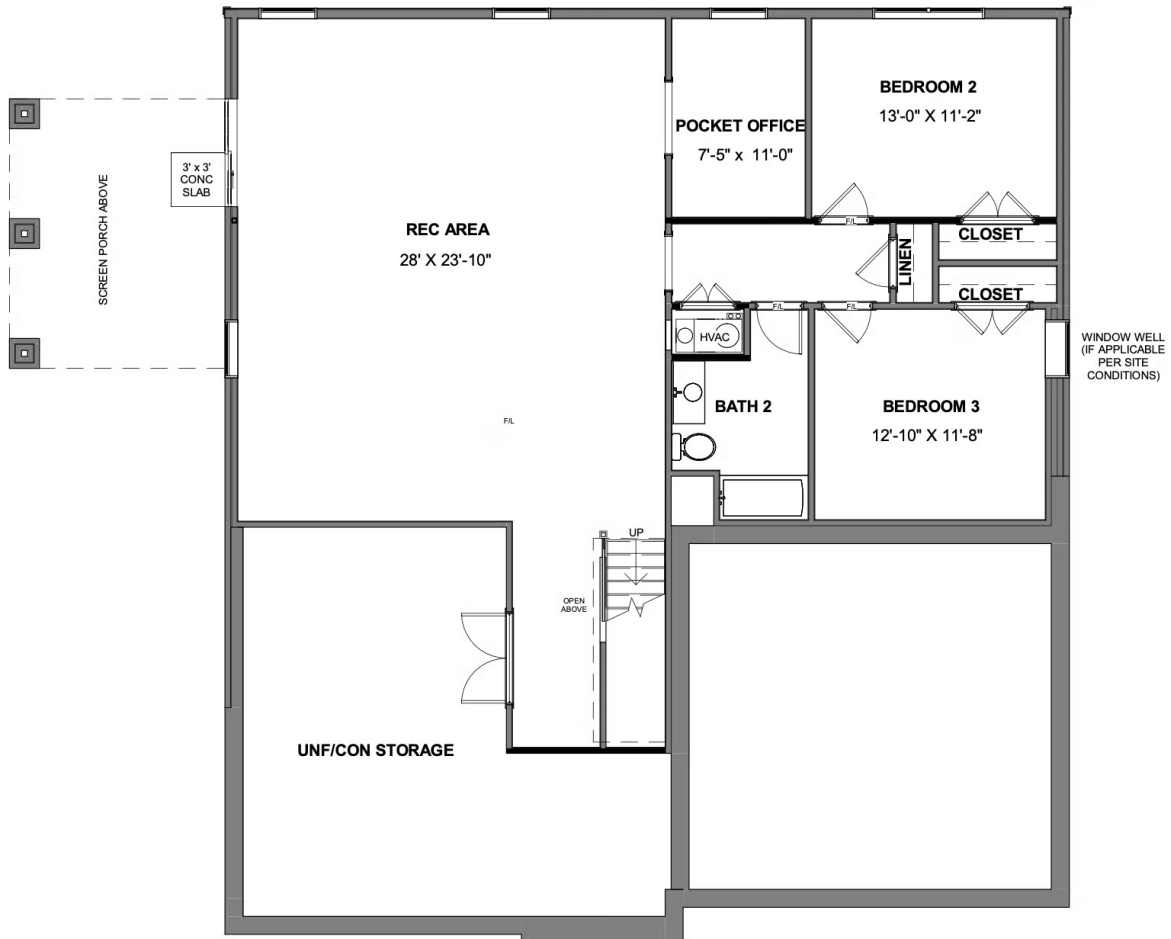
This information is deemed reliable but not guaranteed. All details, dimensions, square footage, illustrations and pricing are approximate and may vary from actual plans and specifications. Contact an Eagle Sales Consultant for details. Current information as of 11th May 2024

12437 Leith Hill Circle

AT READERS BRANCH SINGLE FAMILY HOMES



TERRACE LEVEL



eagleofva.com

This information is deemed reliable but not guaranteed. All details, dimensions, square footage, illustrations and pricing are approximate and may vary from actual plans and specifications. Contact an Eagle Sales Consultant for details. Current information as of 11th May 2024