






-  2 - 3 Bedrooms
-  2.5 Bathrooms
-  1,504 Square Feet
-  1 Car Garage
-  2 Levels



Welcome to modern urban living like never before with the Arlington, a 2-level, 2-bedroom condo offering 1,504 square feet of space. Arrive home to your private 1-car garage and step into a true chef's kitchen and open living room ready for relaxing or entertaining. A half-bath powder room completes the first floor. Step up the open stairwell to the second floor where your primary suite awaits with dual-sink bath and generous walk-in closet. Here you'll also find an additional bedroom, full bath, and laundry, and flexible loft space that leads out to a rear outside deck ready for kicking back and soaking up the good life. Pets are welcome

Features of this Floorplan

- Loft
- Option for additional bedroom
- Option for spacious deck

THE **Arlington**

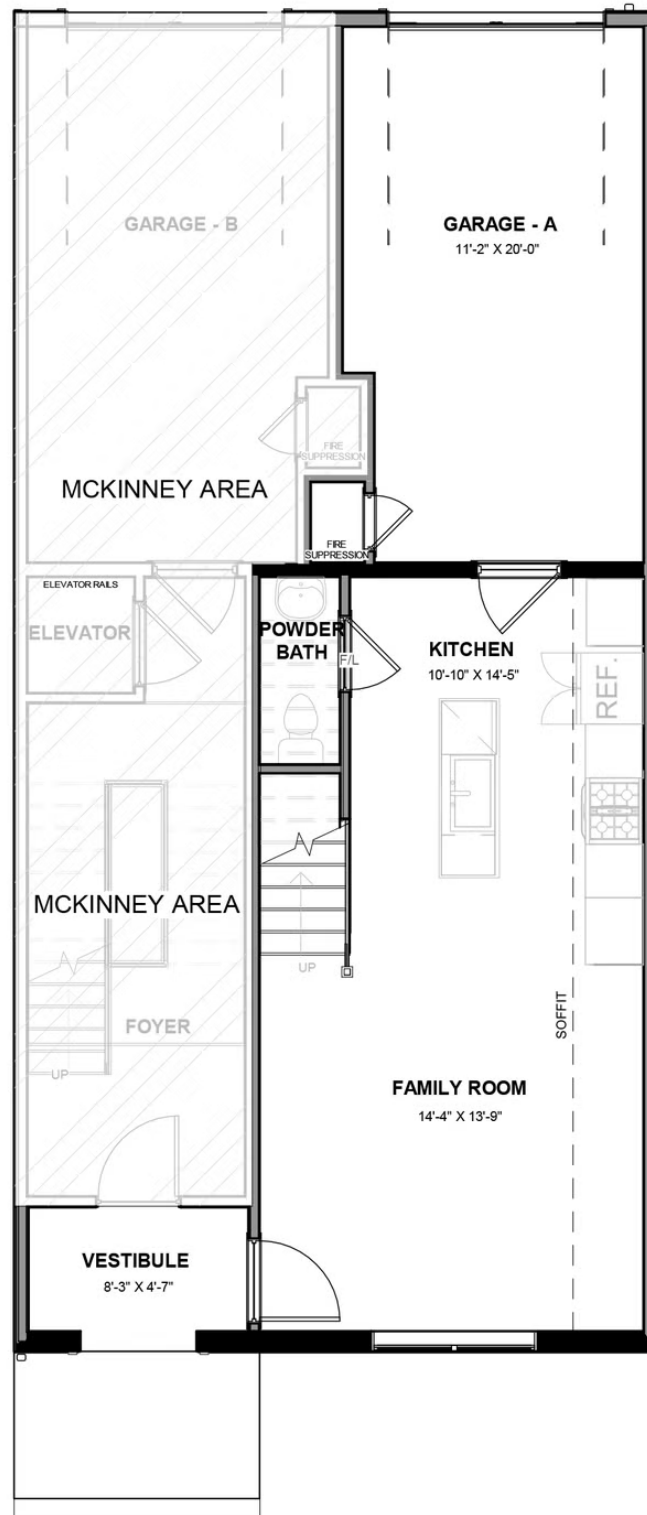
AT WEST BROAD VILLAGE



eagleofva.com

This information is deemed reliable but not guaranteed. All details, dimensions, square footage, illustrations and pricing are approximate and may vary from actual plans and specifications. Contact an Eagle Sales Consultant for details. Current information as of 20th May 2024

FIRST FLOOR



SECOND FLOOR

