





# 7560 Hutton Circle

AT PARKSIDE VILLAGE



-  3 Bedrooms
-  2.5 Bathrooms
-  3300 Square Feet
-  2 Car Garage

**\$799,990**



Think you've seen it all? Then you haven't seen Linden Terrace, a 2-story plan with 3 bedrooms, 2.5 baths, a 2-car garage, and over 3,300 glorious square feet of pure home happiness. A front porch made for sipping lemonade and social graces welcomes you inside to a chef's dream kitchen offering a scenic vista overlooking both breakfast nook and family room with fireplace. The kitchen and breakfast nook have been expanded to give you even more room to enjoy. A formal dining room and home study lend sophistication and flexibility, while a secluded first floor primary suite with spacious walk-in closet and Serenity primary bath offer a quiet escape. Step downstairs to the terrace level where an expanded rec room, full bath, and two additional bedrooms blend playfulness, with easygoing comfort and everyday livability—while a cavernous unfinished storage area is ready for whatever you can imagine.

## Features of this Home

- Large Homesite with Wooded Backyard
- Huge Side Yard
- Kitchen/breakfast nook expansion
- Expanded rec room in basement
- Serenity primary bath
- Fireplace in family room
- High definition video package

[eagleofva.com](http://eagleofva.com)

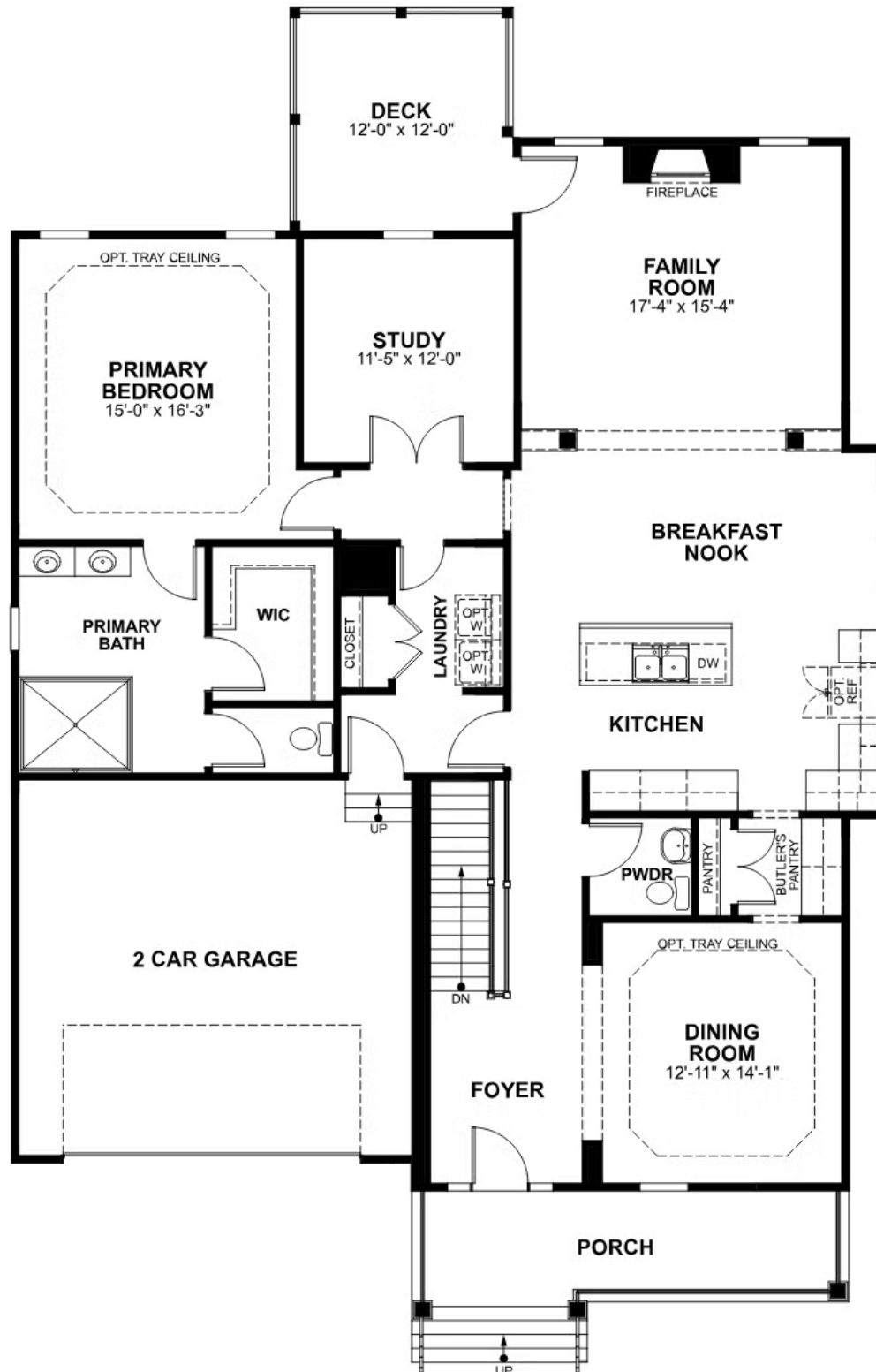
This information is deemed reliable but not guaranteed. All details, dimensions, square footage, illustrations and pricing are approximate and may vary from actual plans and specifications. Contact an Eagle Sales Consultant for details. Current information as of 8th May 2024

# 7560 Hutton Circle

AT PARKSIDE VILLAGE



## MAIN LEVEL



[eagleofva.com](http://eagleofva.com)

This information is deemed reliable but not guaranteed. All details, dimensions, square footage, illustrations and pricing are approximate and may vary from actual plans and specifications. Contact an Eagle Sales Consultant for details. Current information as of 8th May 2024

7560 Hutton Circle  
AT PARKSIDE VILLAGE

