





# 1078 Round Meadow Drive

AT THE MEADOWS



-  3 Bedrooms
-  2.5 Bathrooms
-  2677 Square Feet
-  2 Car Garage

**\$641,237**



A modern classic with ageless appeal, the Linden III is a 2-story plan offering 3 bedrooms, 2.5 baths, a 2-car garage, and over 2,600 square feet of spaciousness ready for your personal touch. The aroma and allure of home cooking draws you in to an expansive kitchen and island overlooking the open breakfast nook and family room, complete with a back deck perfect for chilling and grilling. Tucked down the hallway and past the study, the first floor primary suite offers a secluded escape with a dual-sink bathroom oasis and cavernous walk-in closet. At the front of the house, a formal dining room is ready to host guests and gatherings alike, while a central laundry promises good clean living. Upstairs offers an open loft landing, two bedrooms, a full bath, and ample additional storage.

## Features of this Home

- First Floor Primary Bedroom Suite featuring the Serenity Bath with Enlarged Shower
- 2 Foot Expansion to Kitchen and Breakfast Nook Area
- Conditioned/Unfinished Storage Area on 2nd Floor
- French Doors in Study
- Fireplace in Family Room
- Hardwood Stairs
- High Definition Video Package in Family Room
- LED Recessed Lighting Package with Dimmer Switch in Family Room and Primary Bedroom

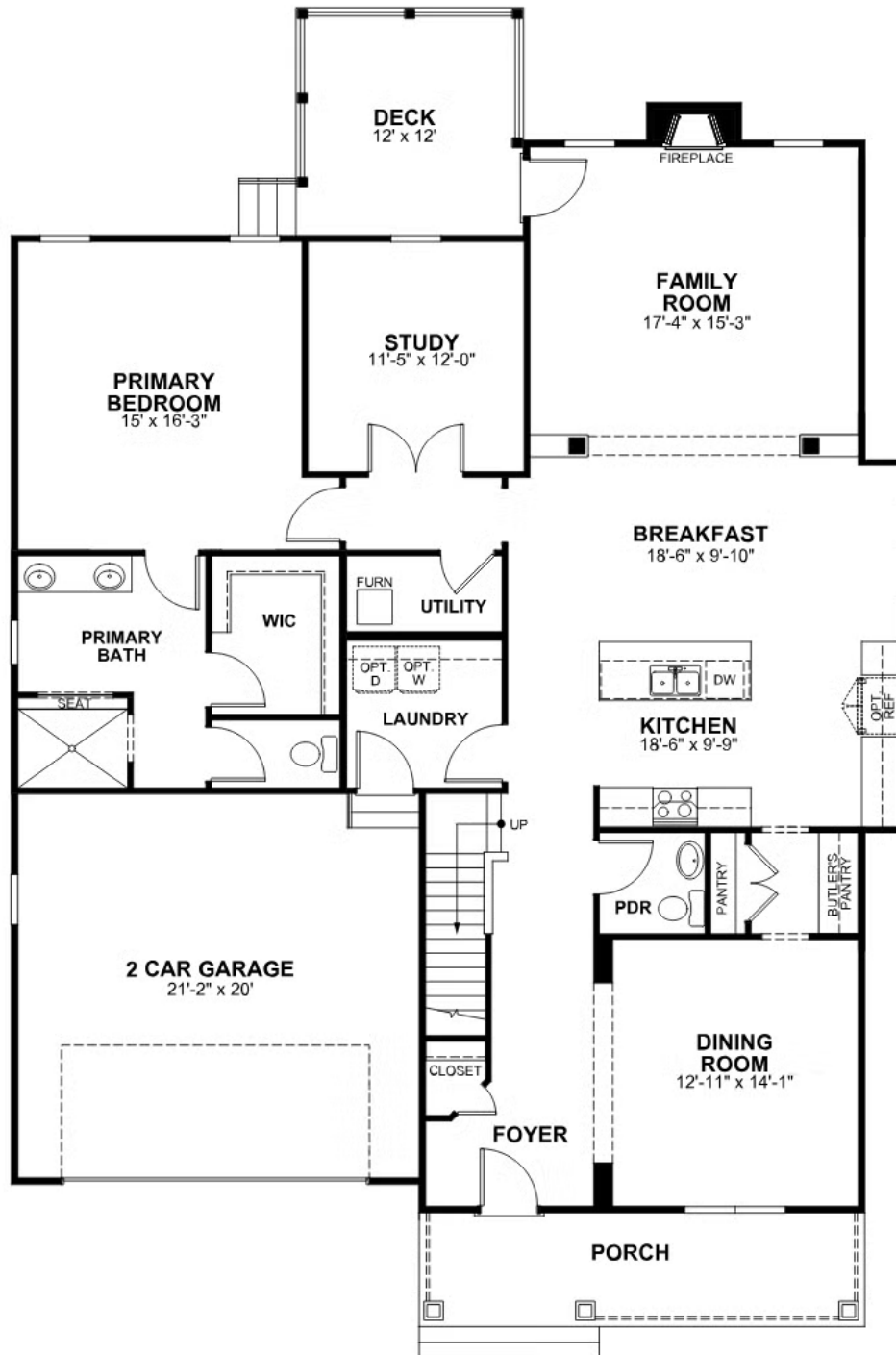
[eagleofva.com](http://eagleofva.com)

# 1078 Round Meadow Drive

AT THE MEADOWS



## FIRST FLOOR



eagleofva.com

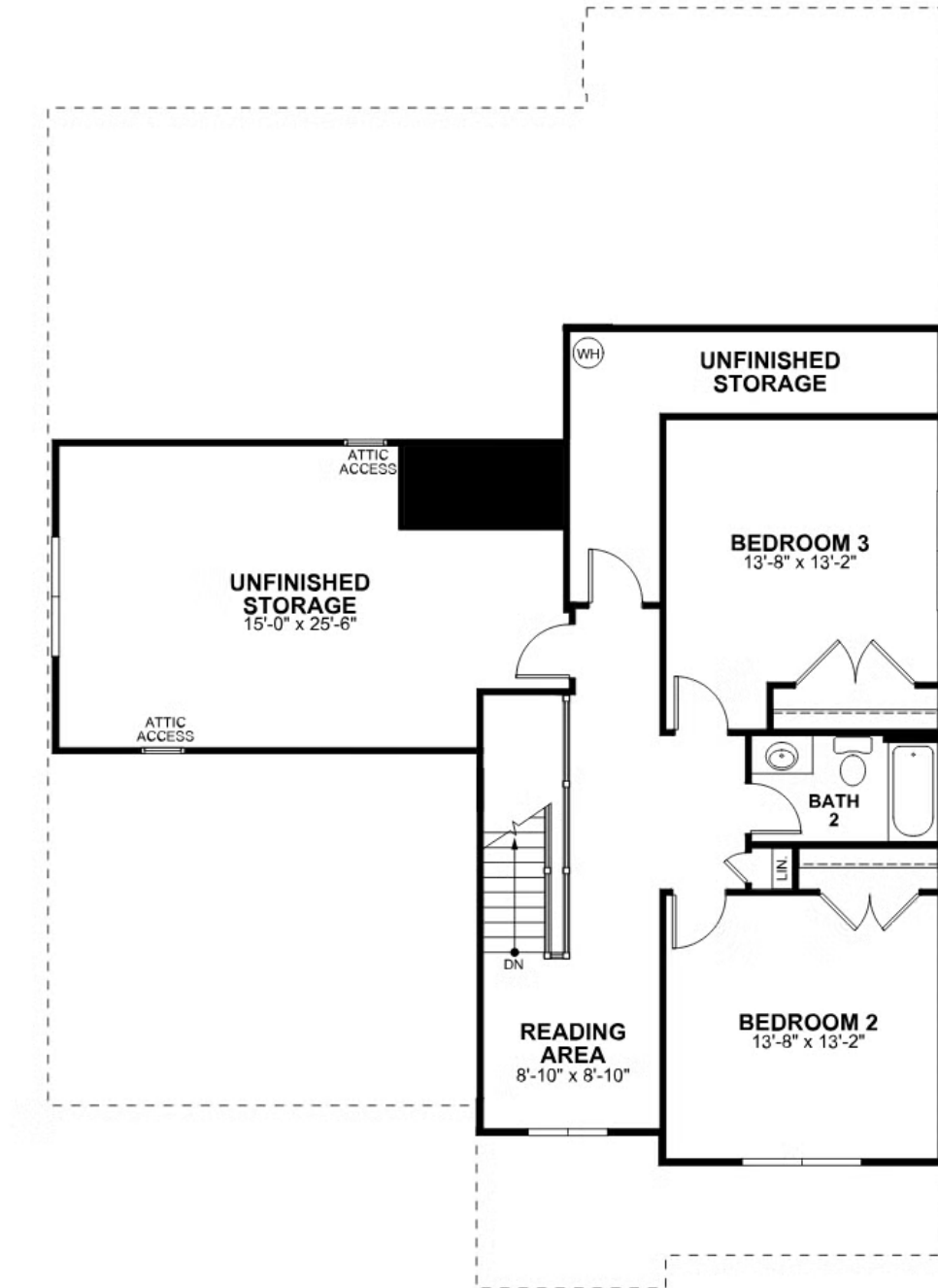
This information is deemed reliable but not guaranteed. All details, dimensions, square footage, illustrations and pricing are approximate and may vary from actual plans and specifications. Contact an Eagle Sales Consultant for details. Current information as of 13th May 2024

# 1078 Round Meadow Drive

AT THE MEADOWS



## SECOND FLOOR



[eagleofva.com](http://eagleofva.com)

This information is deemed reliable but not guaranteed. All details, dimensions, square footage, illustrations and pricing are approximate and may vary from actual plans and specifications. Contact an Eagle Sales Consultant for details. Current information as of 13th May 2024