





1071 Round Meadow Drive

AT THE MEADOWS



-  4 Bedrooms
-  3.5 Bathrooms
-  2842 Square Feet
-  2 Car Garage

\$600,773



Southern hospitality meets modern sensibilities with the Savannah, a 2-story plan offering 4 bedrooms, 2.5+ baths, a 2-car garage and over 2,800 square feet of tranquility ready for personalization. Step into the foyer and ambiance of home as a front study and dining room greet you with open arms. Unleash your inner chef in a dream kitchen with acres of cabinets and large island offering scenic views of the breakfast nook and family room beyond. Let the good life begin—and continue upstairs in a primary suite that caters to your every need with its luxurious dual-sink bath and double walk-in closets. 3 additional bedrooms, 2 full baths, and convenient second floor laundry ensure plenty of space for one and all.

Features of this Home

- Fireplace in Family Room
- Enlarged Primary Bathroom
- Third Bathroom on Second Floor
- Hardwood Stairs
- LED Recessed Lighting Package with Dimmer Switch in Family Room and Primary Bedroom

eagleofva.com

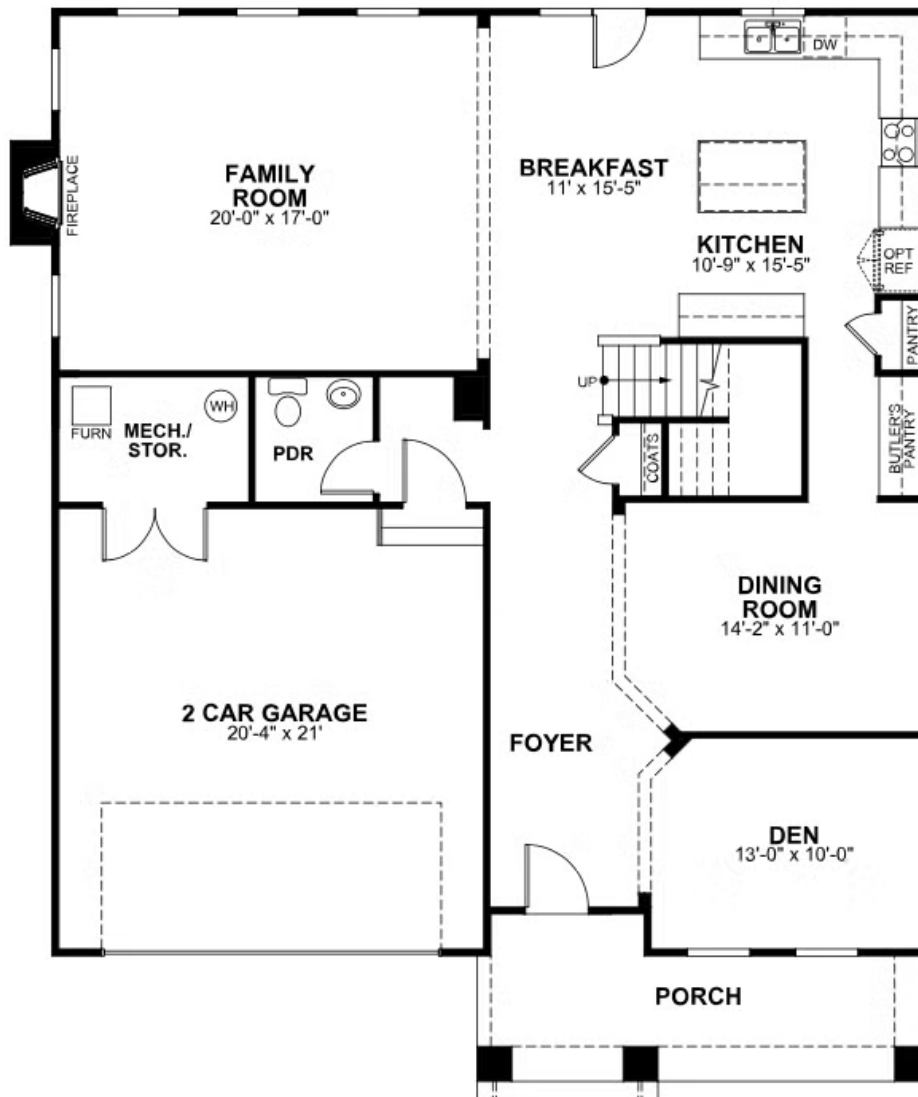
This information is deemed reliable but not guaranteed. All details, dimensions, square footage, illustrations and pricing are approximate and may vary from actual plans and specifications. Contact an Eagle Sales Consultant for details. Current information as of 20th May 2024

1071 Round Meadow Drive

AT THE MEADOWS



FIRST FLOOR



eagleofva.com

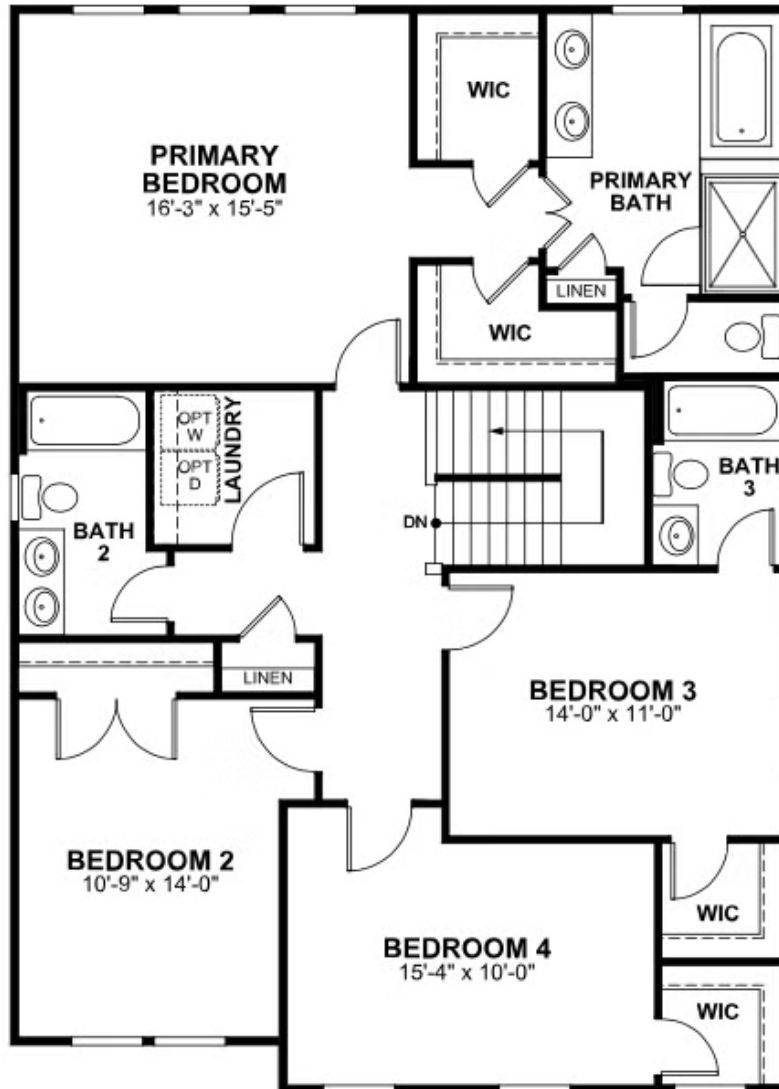
This information is deemed reliable but not guaranteed. All details, dimensions, square footage, illustrations and pricing are approximate and may vary from actual plans and specifications. Contact an Eagle Sales Consultant for details. Current information as of 20th May 2024

1071 Round Meadow Drive

AT THE MEADOWS



SECOND FLOOR



eagleofva.com

This information is deemed reliable but not guaranteed. All details, dimensions, square footage, illustrations and pricing are approximate and may vary from actual plans and specifications. Contact an Eagle Sales Consultant for details. Current information as of 20th May 2024