





# 1027 Round Meadow Drive

AT THE MEADOWS



-  3 Bedrooms
-  2.5 Bathrooms
-  3375 Square Feet
-  2 Car Garage

**\$719,990**



Think you've seen it all? Then you haven't seen Linden Terrace, a 2-story plan with 3 bedrooms, 2.5 baths, a 2-car garage, and over 3,300 glorious square feet of pure home happiness. A front porch made for sipping lemonade and social graces welcomes you inside to a chef's dream kitchen (with 2 foot extension) offering a scenic vista overlooking both breakfast nook and family room complete with fireplace. A formal dining room and home study lend sophistication and flexibility, while a secluded first floor primary suite with spacious walk-in closet and Serenity primary bath offer a quiet escape. Step downstairs to the terrace level where an expanded rec room, full bath, and two additional bedrooms blend playfulness, with easygoing comfort and everyday livability—while a large unfinished storage area is ready for whatever you can imagine.

## Features of this Home

- Serenity primary bath
- 2 foot kitchen and breakfast nook bump out
- Expanded rec room on terrace basement level
- Lanai
- Fireplace in family room
- High definition video package
- LED recessed light package with dimmer

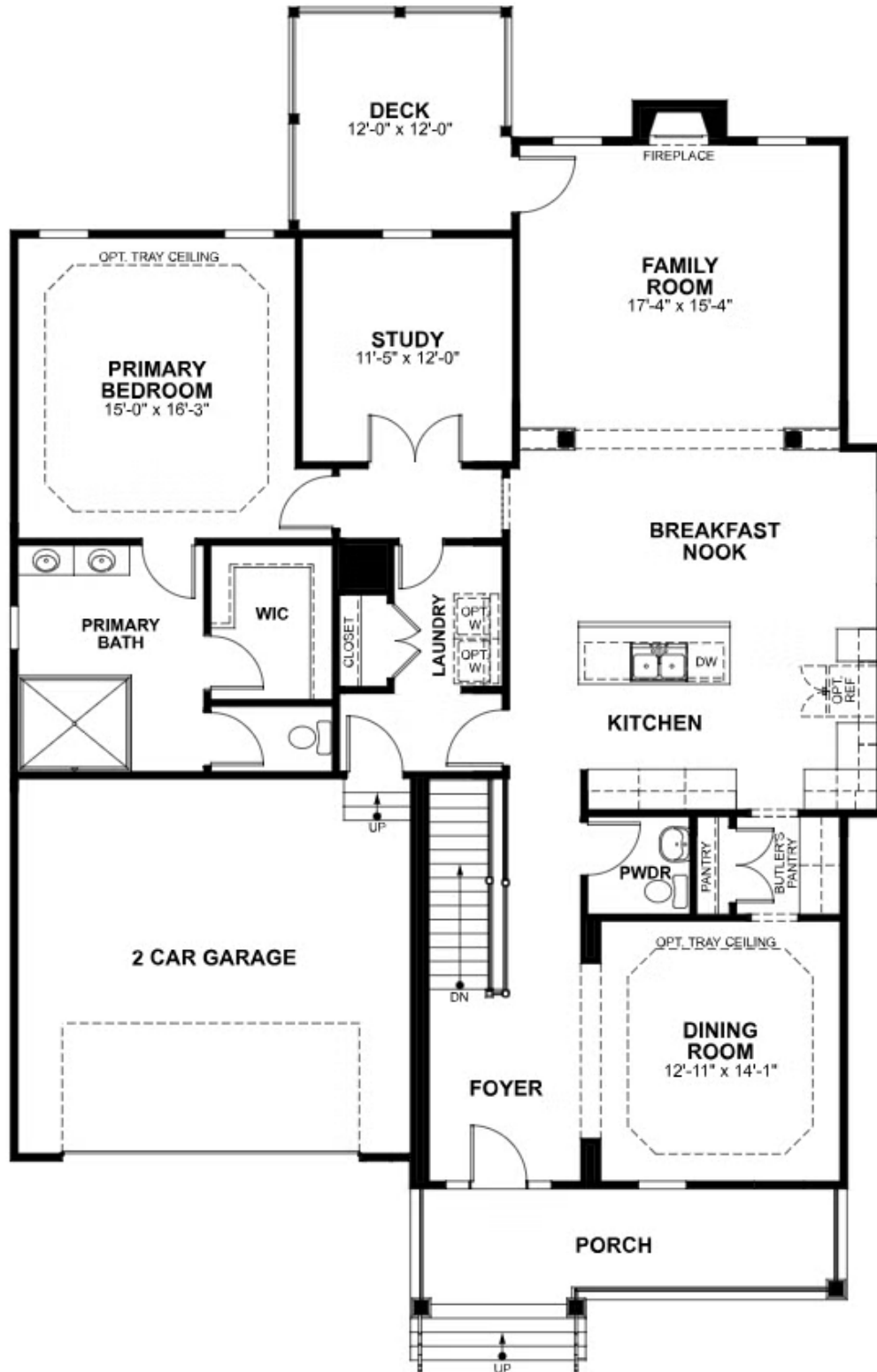
[eagleofva.com](http://eagleofva.com)

# 1027 Round Meadow Drive

AT THE MEADOWS



## MAIN LEVEL

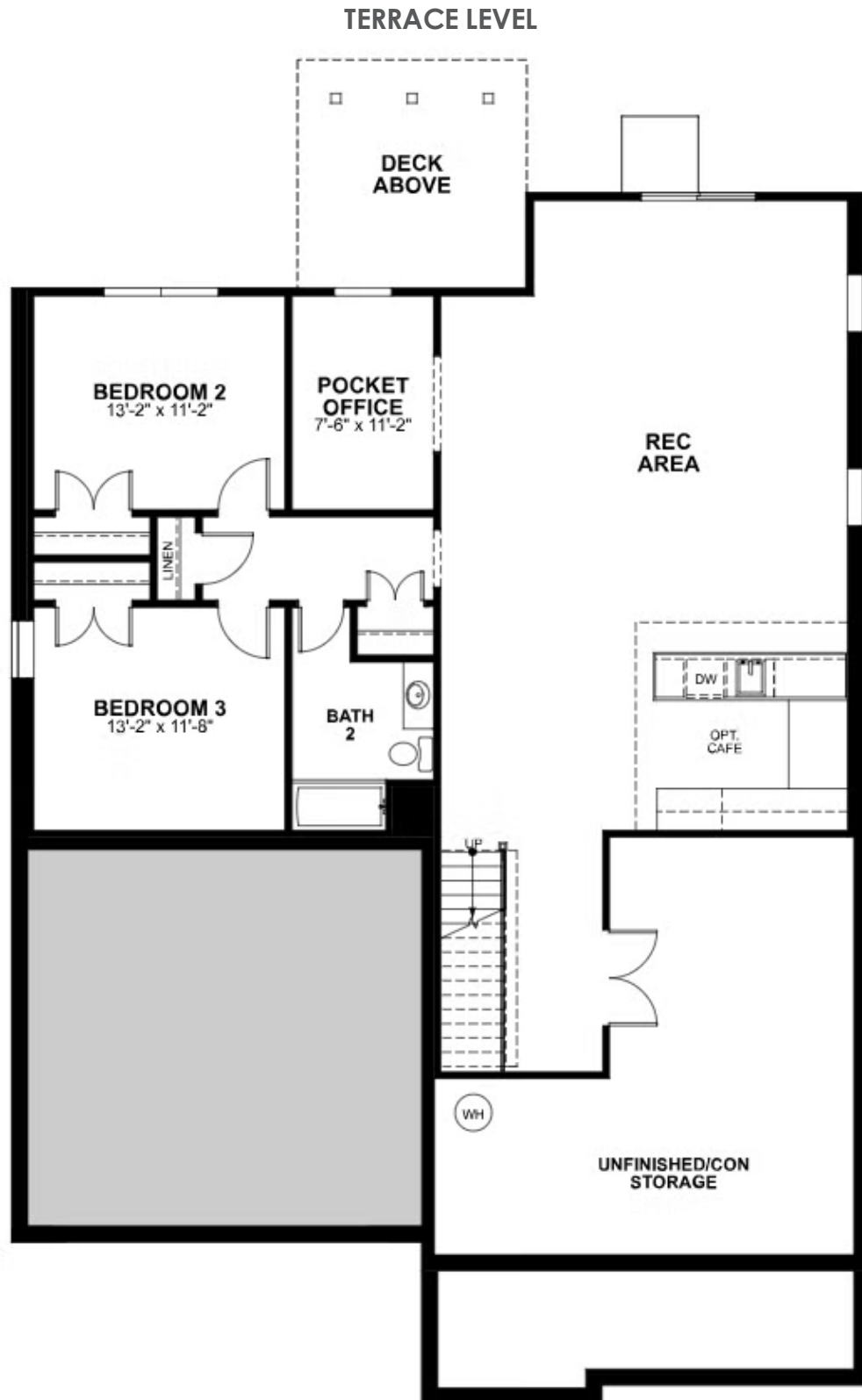


[eagleofva.com](http://eagleofva.com)

This information is deemed reliable but not guaranteed. All details, dimensions, square footage, illustrations and pricing are approximate and may vary from actual plans and specifications. Contact an Eagle Sales Consultant for details. Current information as of 11th May 2024

# 1027 Round Meadow Drive

AT THE MEADOWS



eagleofva.com

This information is deemed reliable but not guaranteed. All details, dimensions, square footage, illustrations and pricing are approximate and may vary from actual plans and specifications. Contact an Eagle Sales Consultant for details. Current information as of 11th May 2024