






THE Highland with 2-Car Garage

AT THE PRESERVE TOWNHOMES



-  3 - 4 Bedrooms
-  3.5 Bathrooms
-  1,894 Square Feet
-  2 Car Garage
-  3 Levels



Brand New Plan at The Preserve Townhomes - The Highland with 2-Car Garage and Basement! Welcome to the Highland w/2-car garage, a brand new 3-story townhome for sale in Blacksburg, VA. At the front of the home you will find the dining room, which can be converted to either a den or a first floor bedroom. Enjoy a well-appointed kitchen with large island open to the family room, perfect for watching football with friends and family, or a cozy night in. Head on upstairs where you will find your primary bedroom with walk-in closet and attached primary bath. Two additional bedrooms and laundry complete the space. You can head down to your basement level to find a finished flex room and access to your 2-car garage. There is an optional second floor layout that includes dual primary bedrooms. Enjoy scenic mountain views from your front porch just minutes from downtown Blacksburg, schools, shopping, and easy access to 460!

eagleofva.com

THE Highland with 2-Car Garage

AT THE PRESERVE TOWNHOMES

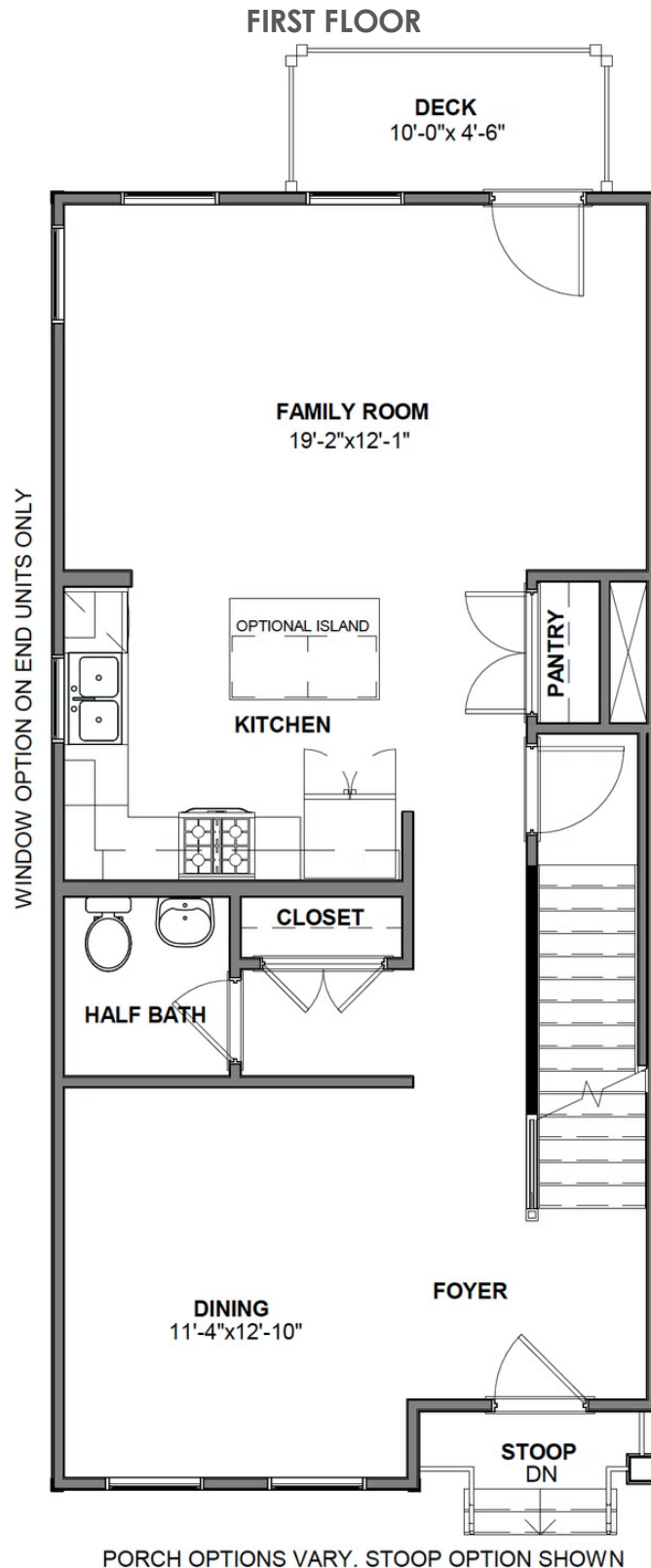


eagleofva.com

This information is deemed reliable but not guaranteed. All details, dimensions, square footage, illustrations and pricing are approximate and may vary from actual plans and specifications. Contact an Eagle Sales Consultant for details. Current information as of 19th May 2024

THE Highland with 2-Car Garage

AT THE PRESERVE TOWNHOMES



eagleofva.com

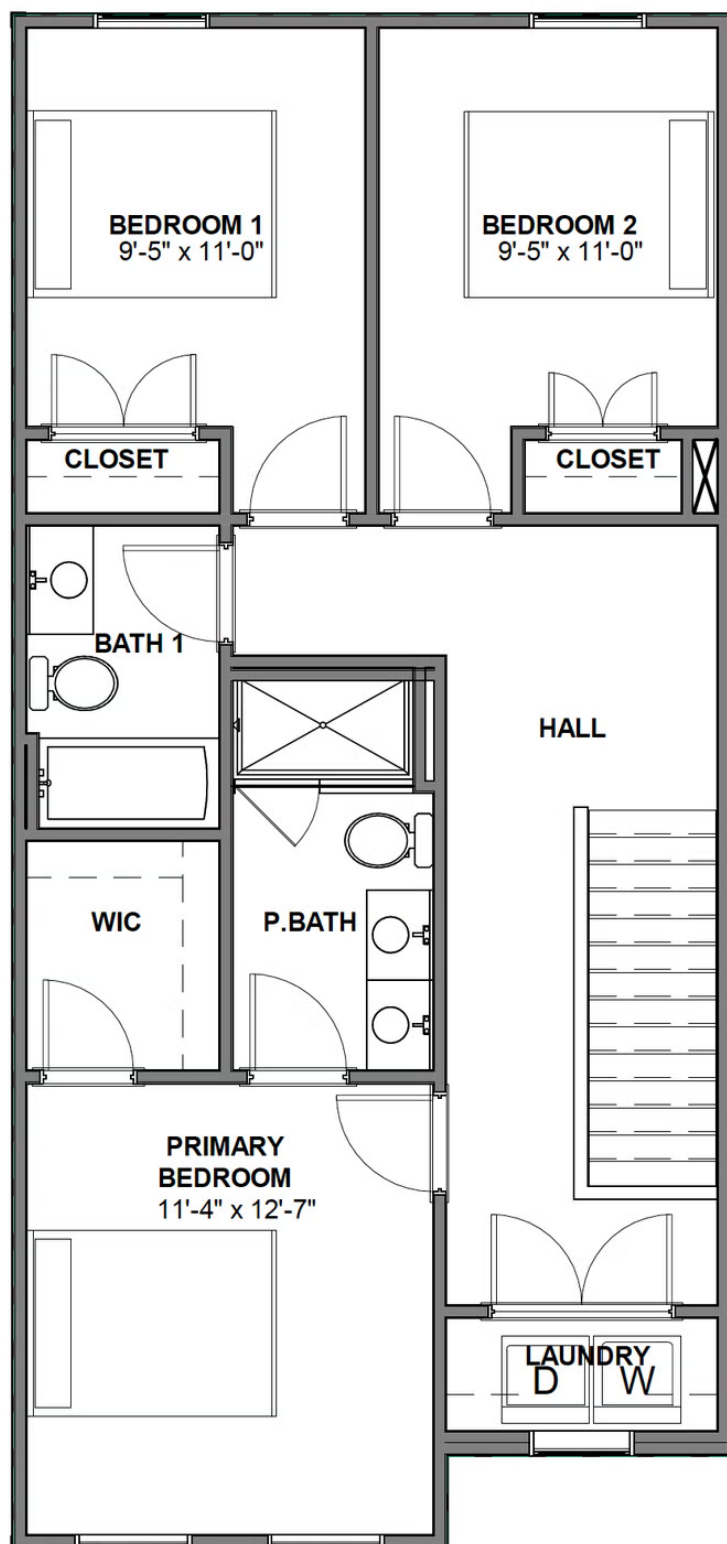
This information is deemed reliable but not guaranteed. All details, dimensions, square footage, illustrations and pricing are approximate and may vary from actual plans and specifications. Contact an Eagle Sales Consultant for details. Current information as of 19th May 2024

THE Highland with 2-Car Garage

AT THE PRESERVE TOWNHOMES



SECOND FLOOR

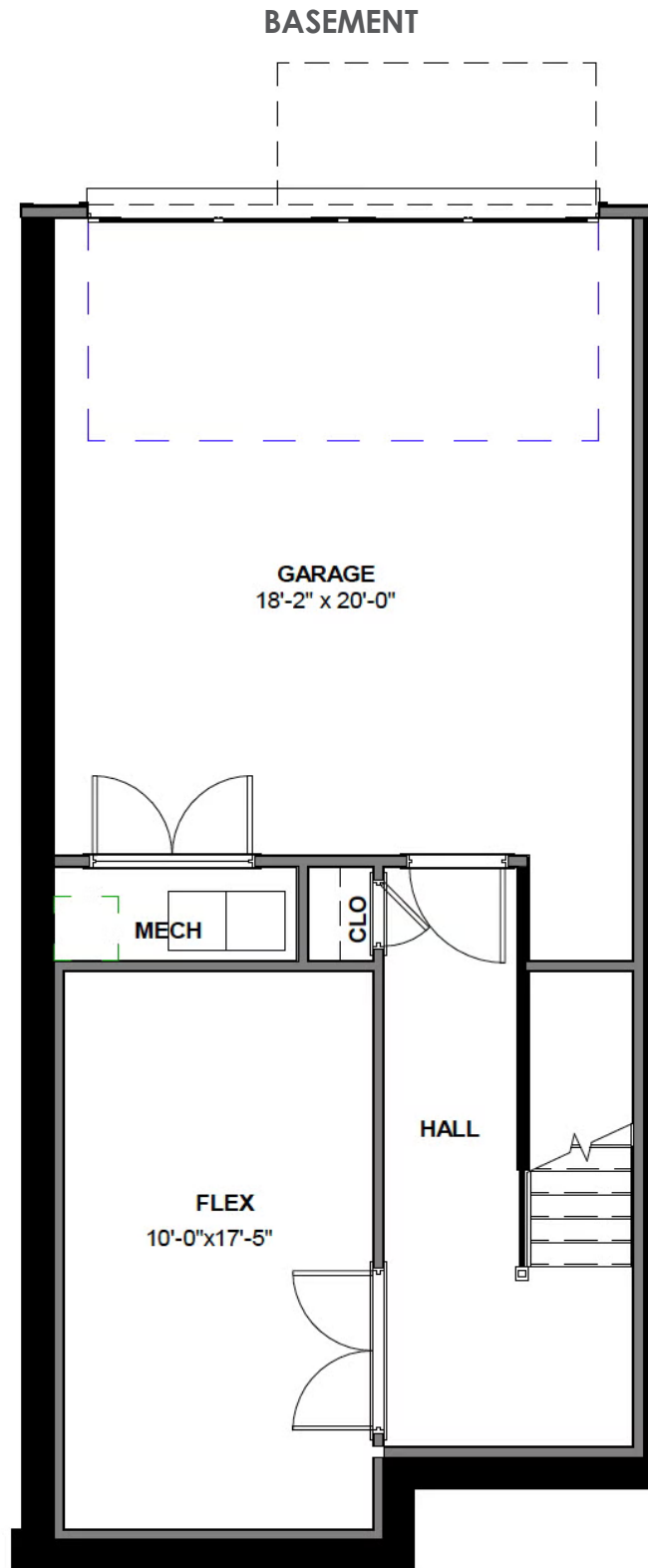


eagleofva.com

This information is deemed reliable but not guaranteed. All details, dimensions, square footage, illustrations and pricing are approximate and may vary from actual plans and specifications. Contact an Eagle Sales Consultant for details. Current information as of 19th May 2024

THE Highland with 2-Car Garage

AT THE PRESERVE TOWNHOMES



eagleofva.com

This information is deemed reliable but not guaranteed. All details, dimensions, square footage, illustrations and pricing are approximate and may vary from actual plans and specifications. Contact an Eagle Sales Consultant for details. Current information as of 19th May 2024