

THE Longleaf

AT THE PRESERVE SINGLE FAMILY HOMES



-  4 Bedrooms
-  3.5 Bathrooms
-  2,094 Square Feet



Welcome home to the Longleaf, where functionality and livability combine to create just the home you've been looking for. The 2-car garage leads you right to your drop zone. The kitchen features a large island with sight lines to the breakfast nook and on to the family room. At the front of the home, you'll find a flex room tucked away, perfect for an office, play room, or even a workout space. A deck finishes off the first floor to give you just the space to kick back and relax while enjoying the amazing mountain views. Head on up to the second floor and retreat to your spacious primary bedroom with attached primary bath and large walk-in closet. You'll also find three additional bedrooms (one with it's own private full bath), a full bath in the hall, and laundry.

eagleofva.com

THE Longleaf

AT THE PRESERVE SINGLE FAMILY HOMES



Craftsman



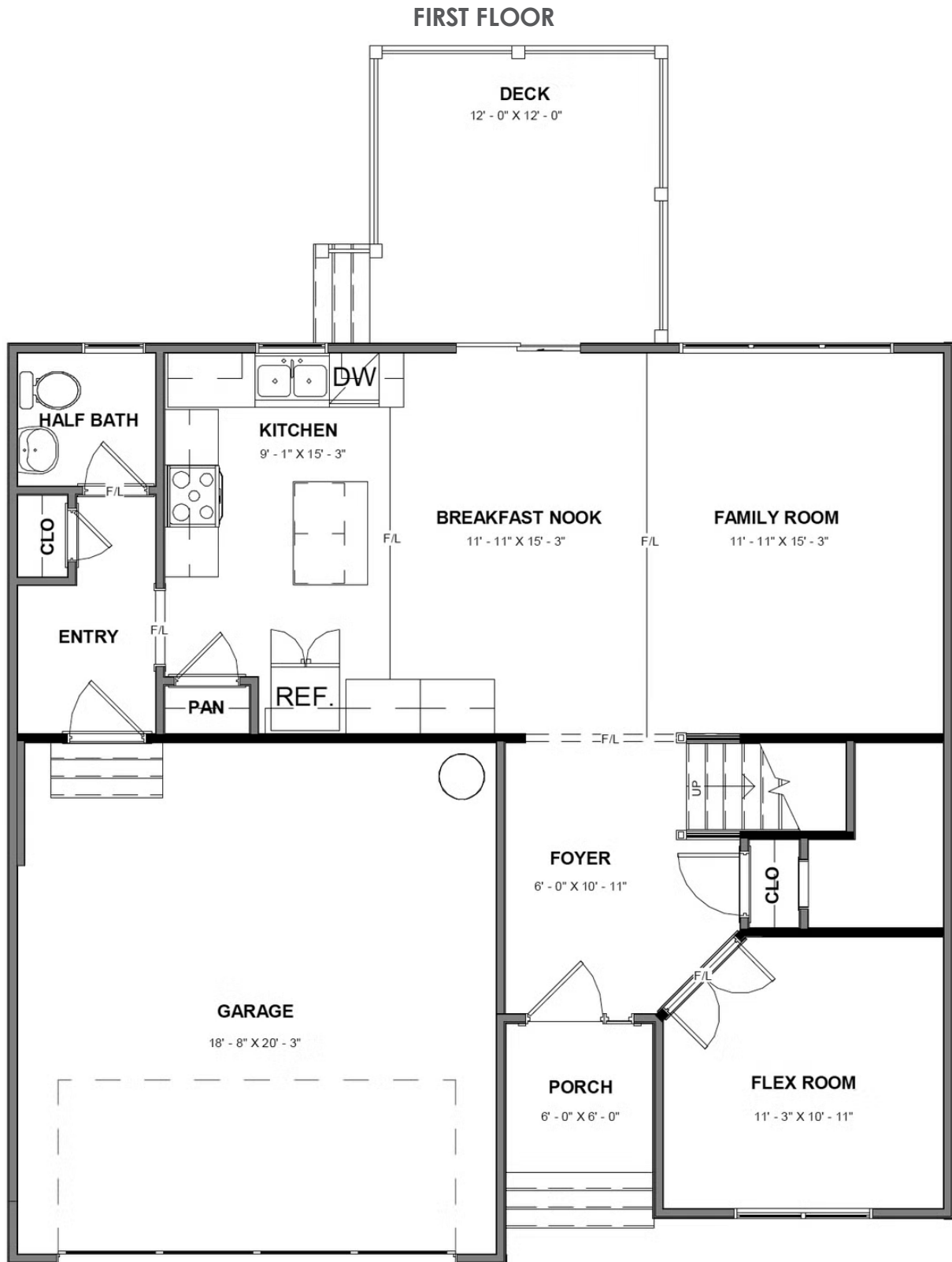
Arts & Crafts



Traditional

eagleofva.com

This information is deemed reliable but not guaranteed. All details, dimensions, square footage, illustrations and pricing are approximate and may vary from actual plans and specifications. Contact an Eagle Sales Consultant for details. Current information as of 20th May 2024



SECOND FLOOR

