





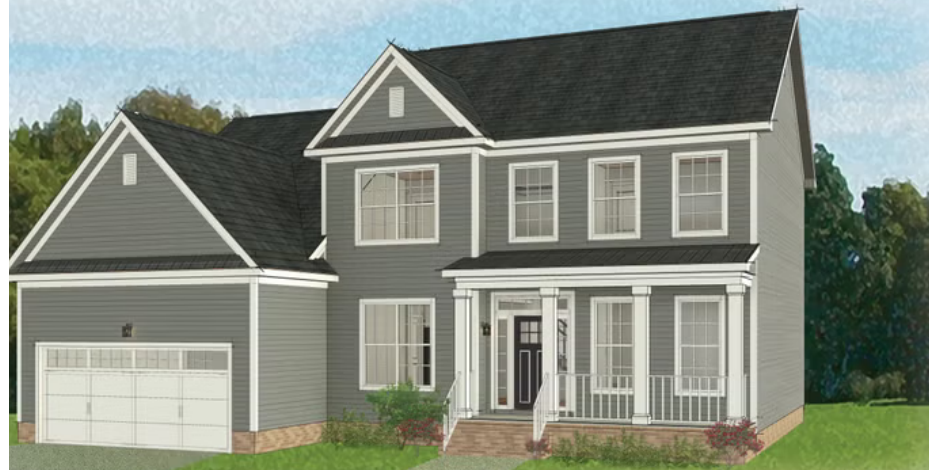
3035 Natalies Way

AT THE PRESERVE SINGLE FAMILY HOMES



-  4 Bedrooms
-  3.5 Bathrooms
-  2641 Square Feet
-  2 Car Garage

\$654,814



The Westminster is a 2 story single family new home floor plan with 4 bedrooms, 3.5 baths, and over 2,600 square feet of living space to personalize for your lifestyle. Walk in the front door and you'll find a foyer flanked by a formal Dining Room and Study. Enter your spacious Family Room and discover that it flows right into the Kitchen with a large island, perfect for cooking and entertaining. Tucked away you'll find your first floor primary bedroom suite which features a huge walk-in closet and a spacious primary bathroom with enlarged shower. The second floor of the home features 3 additional bedrooms with walk-in closets, 2 full baths, and a large unfinished storage area.

Features of this Home

- Serenity Primary Bath with Enlarged Shower
- Bedroom #4 with Attached Full Bath
- Additional Unfinished Storage Area on Second Floor
- Hardwood Stairs
- Fireplace in Family Room
- Gas Range in Kitchen
- LED Recessed Lighting Package in Family Room and Primary Bedroom
- Craftsman Wainscoting in Dining Room
- HD Video Package Above Fireplace
- Hardwood Laminated Flooring on Entire First Floor, Including Primary Bedroom

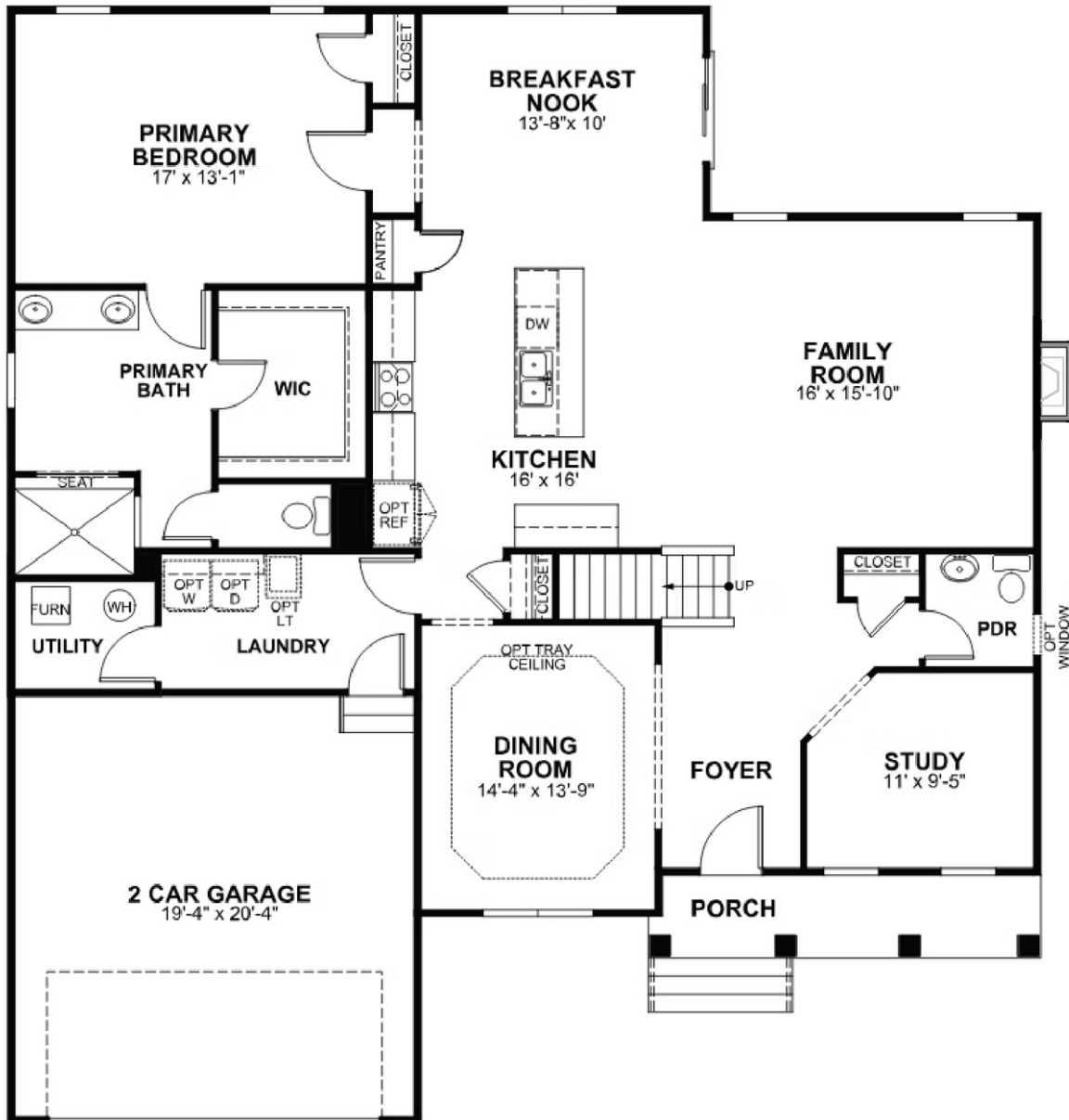
eagleofva.com

3035 Natalies Way

AT THE PRESERVE SINGLE FAMILY HOMES



FIRST FLOOR



eagleofva.com

This information is deemed reliable but not guaranteed. All details, dimensions, square footage, illustrations and pricing are approximate and may vary from actual plans and specifications. Contact an Eagle Sales Consultant for details. Current information as of 19th May 2024

SECOND FLOOR

