





1785 Kyles Way

AT THE PRESERVE SINGLE FAMILY HOMES



-  4 Bedrooms
-  3.5 Bathrooms
-  2842 Square Feet
-  2 Car Garage

\$653,966



Southern hospitality meets modern sensibilities with the Savannah, a 2-story plan offering 4 bedrooms, 2.5 baths, a 2-car garage and over 2,800 square feet of tranquility ready for personalization. Step into the foyer and ambiance of home as a front study and dining room greet you with open arms. Unleash your inner chef in a dream kitchen with acres of cabinets and large island offering scenic views of the breakfast nook and family room beyond. Let the good life begin—and continue upstairs in a primary suite that caters to your every need with its luxurious dual-sink bath, enlarged shower with bench seat and double walk-in closets. 3 additional bedrooms, a full bath, and convenient second floor laundry ensure plenty of space for one and all.

Features of this Home

- Enlarged Primary shower with bench seat
- Interior chase fireplace in Family Room
- 16'x10' deck
- HD Video Package above fireplace
- Convection gas range in Kitchen
- Hardwood laminated flooring in main living areas
- Hardwood stairs

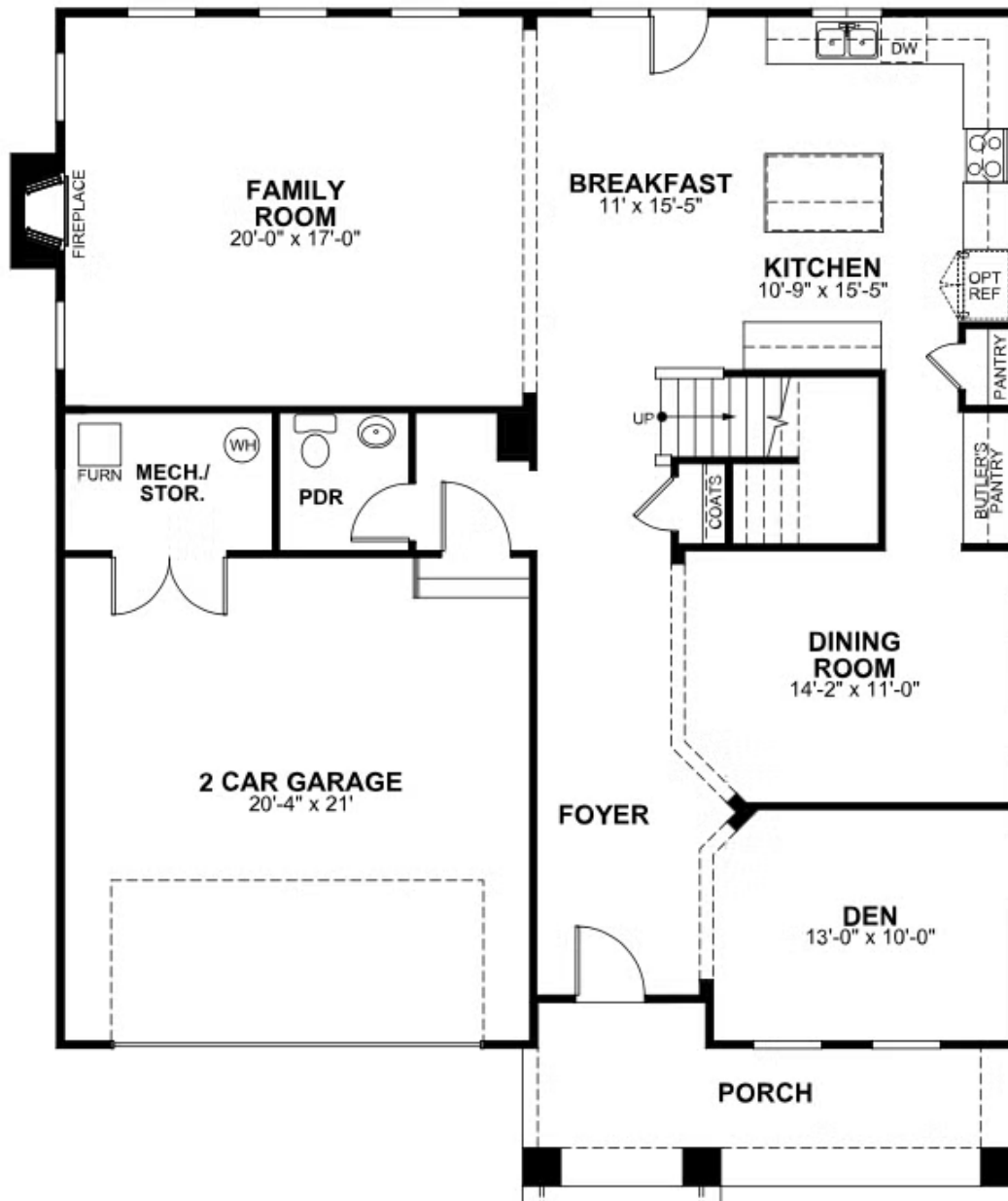
eagleofva.com

1785 Kyles Way

AT THE PRESERVE SINGLE FAMILY HOMES



FIRST FLOOR



eagleofva.com

This information is deemed reliable but not guaranteed. All details, dimensions, square footage, illustrations and pricing are approximate and may vary from actual plans and specifications. Contact an Eagle Sales Consultant for details. Current information as of 12th May 2024

SECOND FLOOR

