





343 Eheart St SW

AT MIDTOWN



-  3 Bedrooms
-  3.5 Bathrooms
-  3508 Square Feet
-  2 Car Garage

\$1,059,990



The Westmoreland is a 4-story luxury townhome with plenty of opportunity to personalize so that this new home floor plan fits your lifestyle. On the first floor, you will find your rear load 2-car garage, as well as a bedroom and full bath. Head up to the second floor where you will find a spacious family room that flows into the Kitchen, Butler's Pantry, and the formal Dining Room.

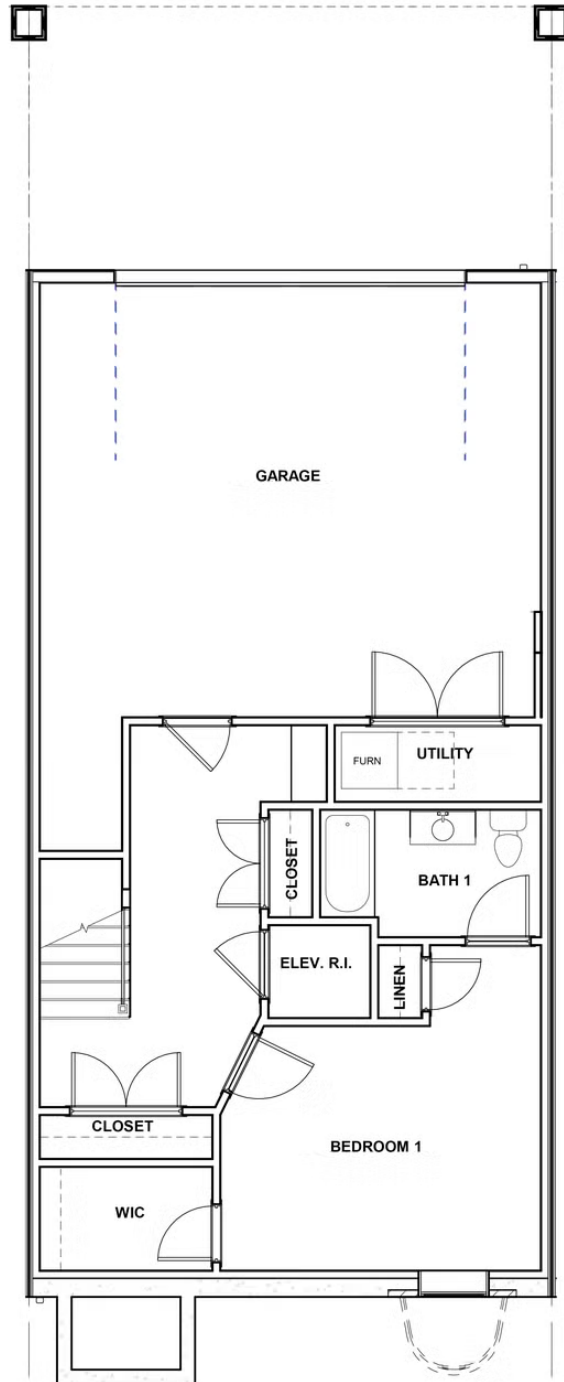
The third floor features an Owner's Suite that expands the entire floor! This features a large primary bedroom, luxurious bathroom, and a dreamy walk-in closet. This floor also has a large laundry room. The fourth floor will quickly become your favorite, featuring a large media room with a NanaWall that leads out to your huge covered rooftop terrace, making this space perfect for entertaining or enjoying a relaxing evening. Plus with a fireplace on your terrace, you will be able to enjoy all year long! The fourth floor also features an additional bedroom and full bath.

Features of this Home

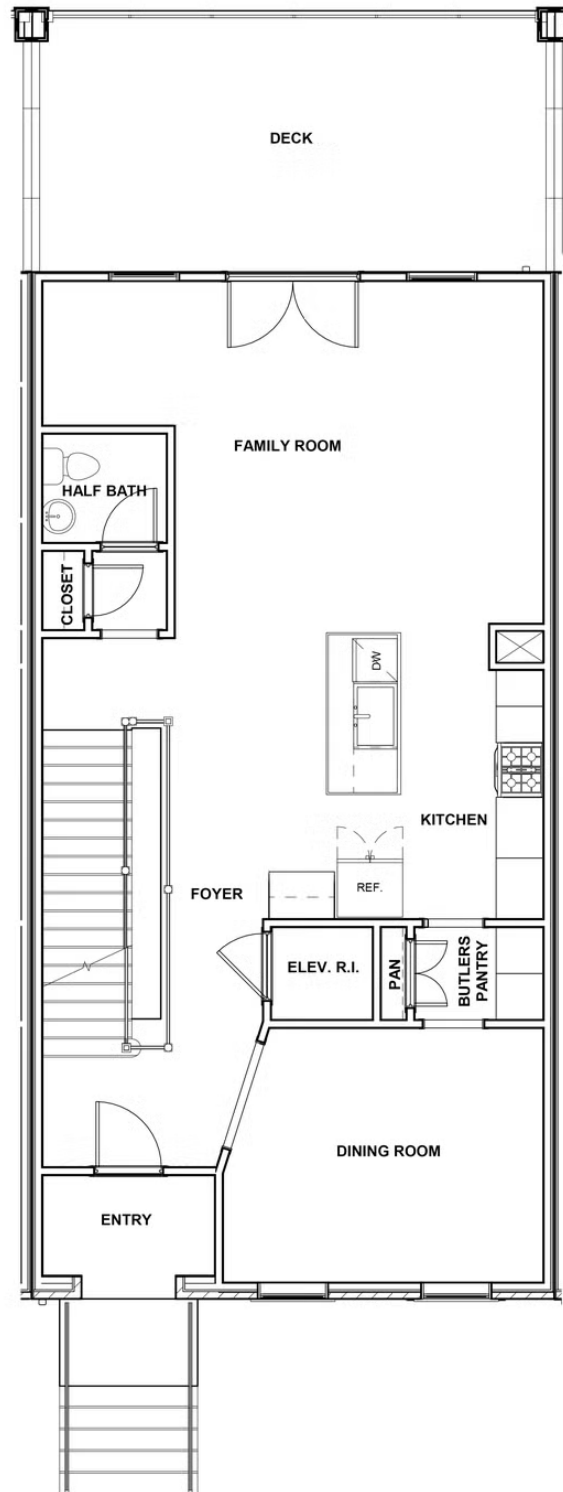
- Entire floor owner's suite with Ultimate primary bath and huge walk-in closet and laundry room
- NanaWall leading out to rear covered terrace with brick fireplace on fourth floor
- Deck on second floor
- Second floor entry luxury townhome

eagleofva.com

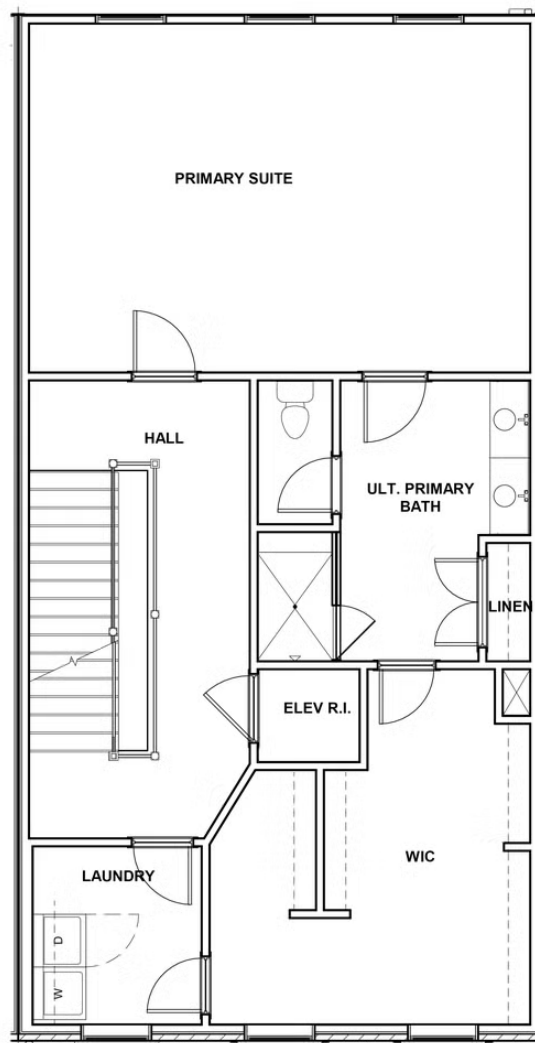
FIRST FLOOR



SECOND FLOOR



THIRD FLOOR



FOURTH FLOOR

