





341 Eheart St SE

AT MIDTOWN



-  4 Bedrooms
-  4.5 Bathrooms
-  3533 Square Feet
-  2 Car Garage

\$1,119,990



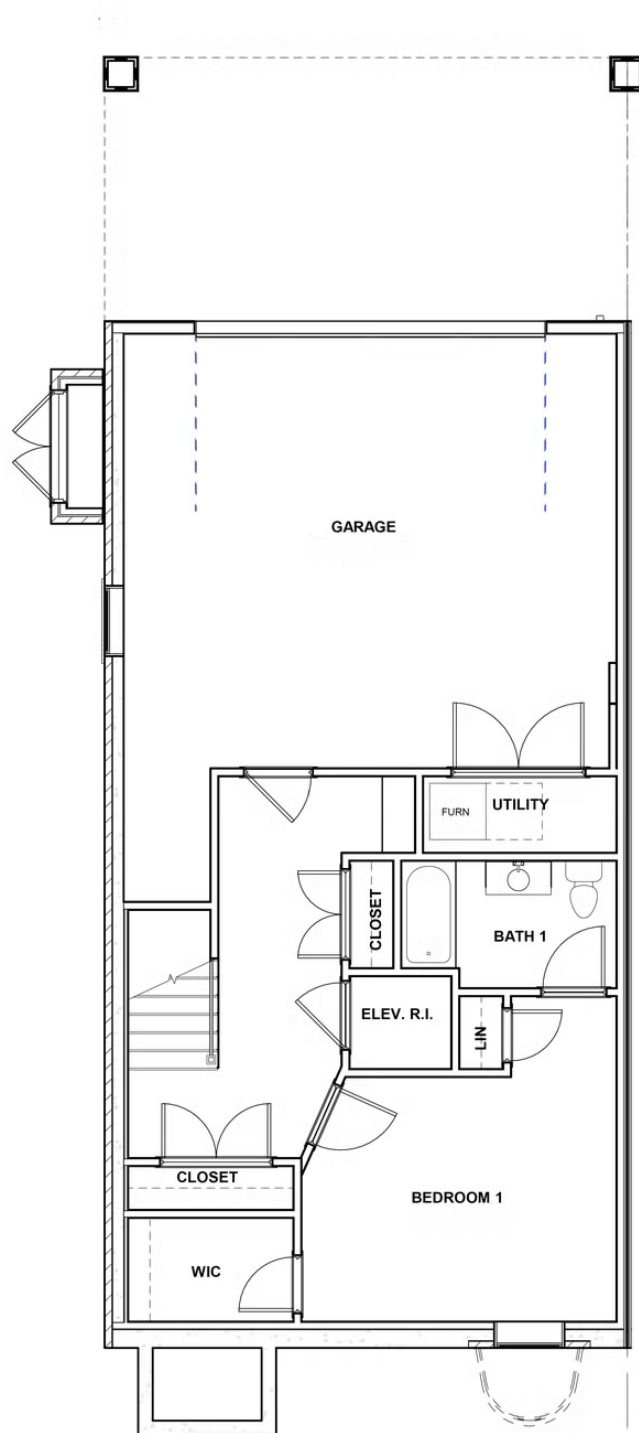
The townhome other homes dream of, the Malvern redefines spaciousness with a multi-level flow teeming with exquisite craftsmanship, authentic details, and flair for modern urban-style living. Offering the end unit benefits of additional windows and natural light, this is a townhome you don't want to miss. A 2-car garage welcomes you to the ground floor with a convenient bedroom and full bathroom. The second level is first class when it comes to relaxing and entertaining, with its masterful flow from dining room to kitchen to family room, and further outward to a large welcoming deck. Move up to the third floor and the comforts of your primary suite with luxurious dual-sink bath and two walk-in closets. A second bedroom and full bath, as well as laundry also call this floor home. The fourth floor will quickly become your favorite with its large media room and NanaWall leading to the amazing rooftop terrace, plus a fireplace for year-round relaxation. A fourth bedroom and full bath completes the top floor.

Features of this Home

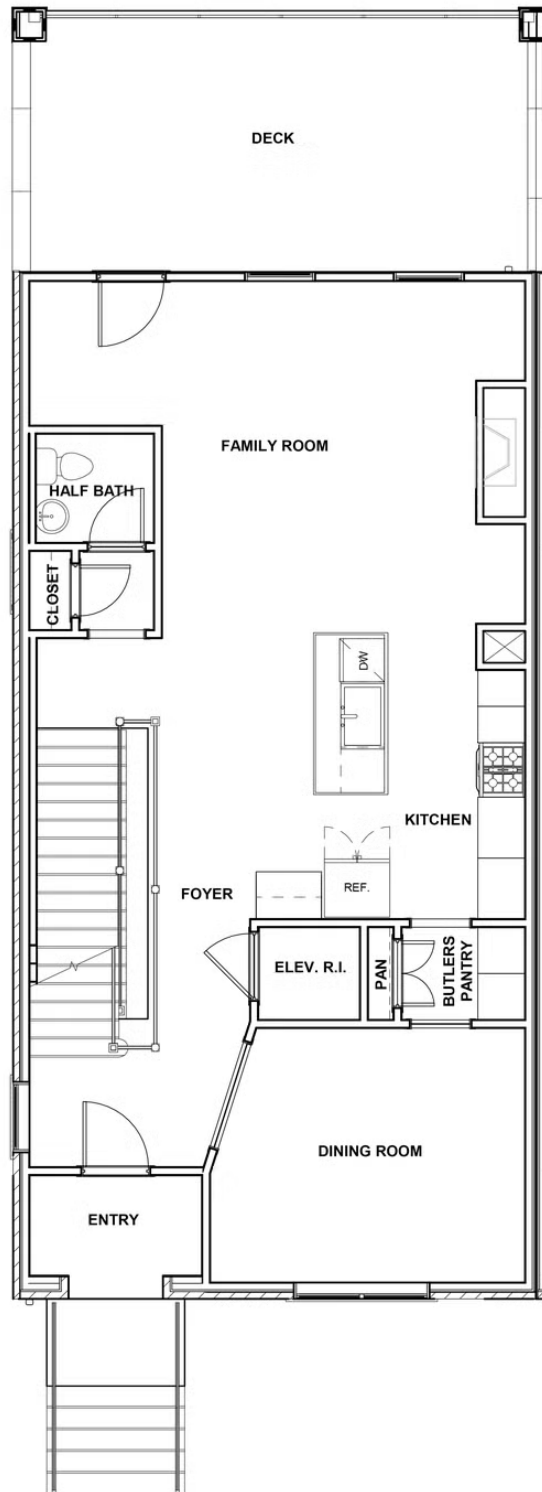
- End unit, second floor entry luxury townhome
- Fireplace in family room with white brick surround to ceiling and floating wooden mantel shelf
- NanaWall leading out to rear covered terrace with brick fireplace on fourth floor
- Ultimate primary bath with two large walk-in closets
- Deck on second floor

eagleofva.com

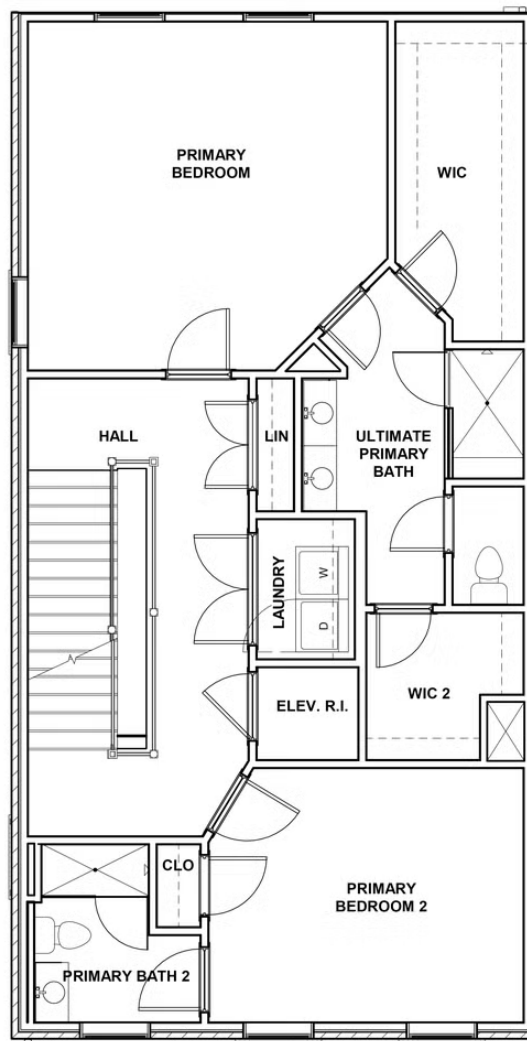
FIRST FLOOR



SECOND FLOOR



THIRD FLOOR



FOURTH FLOOR

