





# 2205 Carroll Drive

AT GIVENS FARM



-  4 Bedrooms
-  3.0 Bathrooms
-  2936 Square Feet
-  2 Car Garage

**\$719,900**



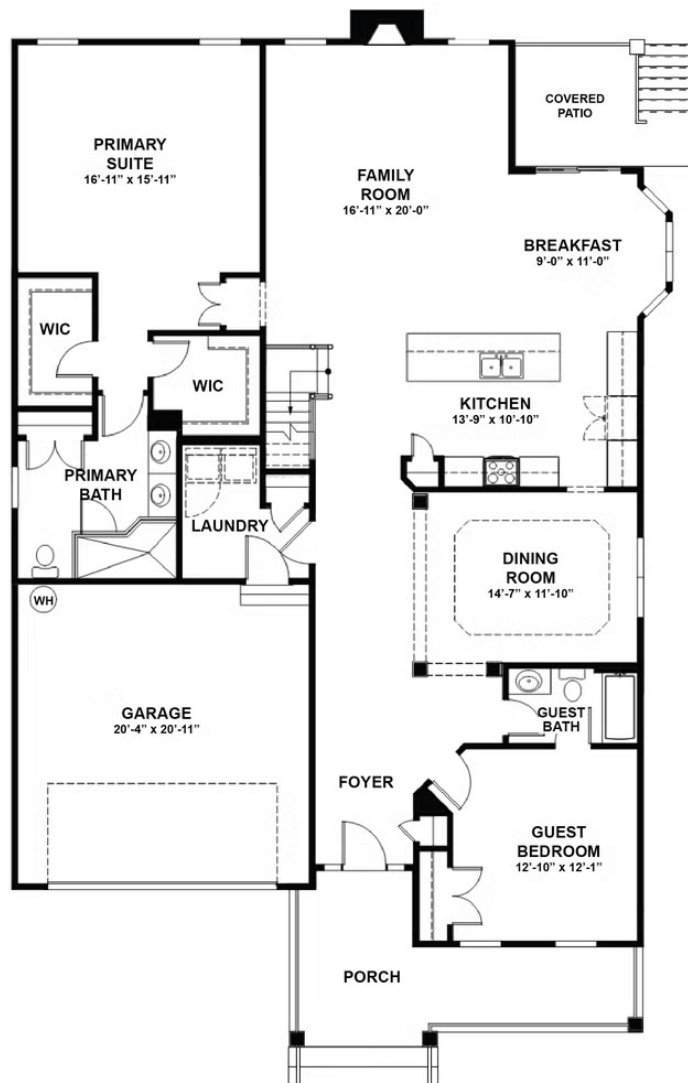
Live like you mean it with this Hartford II, a 2-story plan featuring 4 bedrooms, 3 baths, a 2-car garage and over 2,900 square feet. Step into your light and airy foyer that will warmly welcome you in. From morning coffee in the kitchen to evening news and sofa naps in the family room, it all comes together in the open-flowing heart of the home. A patio extends from the breakfast nook, while at the front of the house a living room and dining room combine to extend the possibilities. A spacious first floor primary suite offers dual walk-in closets and bathroom ready for personalization. The second floor features a large loft area, as well as access to two additional bedrooms, a full bath, and ample storage.

## Features of this Home

- First floor primary bedroom with Ultimate primary bath
- Kitchen features Carrara quartz countertops, white cast iron apron front sink, and 42" Henning Neutral Paint cabinets, stained island, crown molding, refrigerator enclosure, double trash pull out and more
- GE stainless steel gas range, microwave and dishwasher
- Breakfast nook with bay window
- Gas fireplace in family room with white brick surround and stained wood mantel
- First floor guest bedroom
- Expanded Loft
- Covered patio and front porch
- Hardwood stairs and crown molding

[eagleofva.com](http://eagleofva.com)

## FIRST FLOOR



## SECOND FLOOR

