




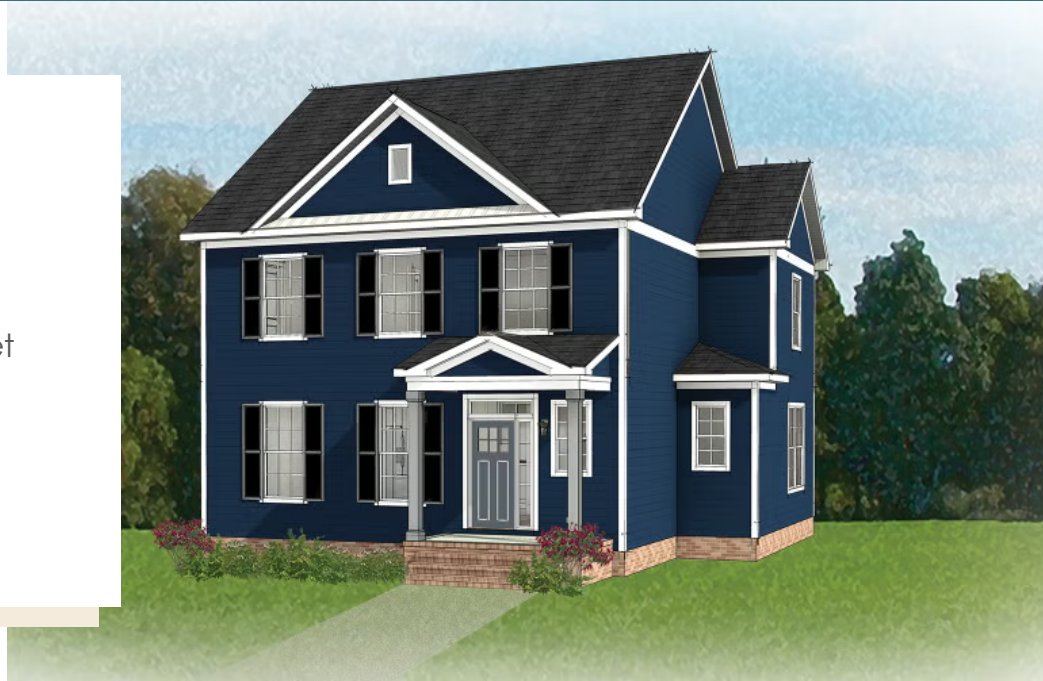


-  3 Bedrooms
-  2.5 Bathrooms
-  2,127 Square Feet
-  2 Car Garage
-  2 Levels



There's no place like home, especially when it's the Grayson, a 2-story plan with 3 bedrooms, 2.5 baths, and over 2,100 square feet of perfectly proportioned space. You'll never miss a meal or minute of the action from kitchen's commanding view of the expansive dining and family room playfields. Need a break? Simply step out to the back deck for a breath of natural freshness. Three bedrooms await upstairs, including the primary suite with spacious dual-sink bath and walk-in closet. An additional full bath, laundry room, and linen closet help keep things squeaky clean. A variety of options, including a breathtaking wraparound front porch, are ready to personalize the Grayson to your lifestyle.

### Features of this Floorplan

- Rear load 2-car garage
- Deck
- Option for screened porch
- Option for morning room
- Multiple primary bath layouts
- Opportunity for wrapped porch



**Arts & Crafts**

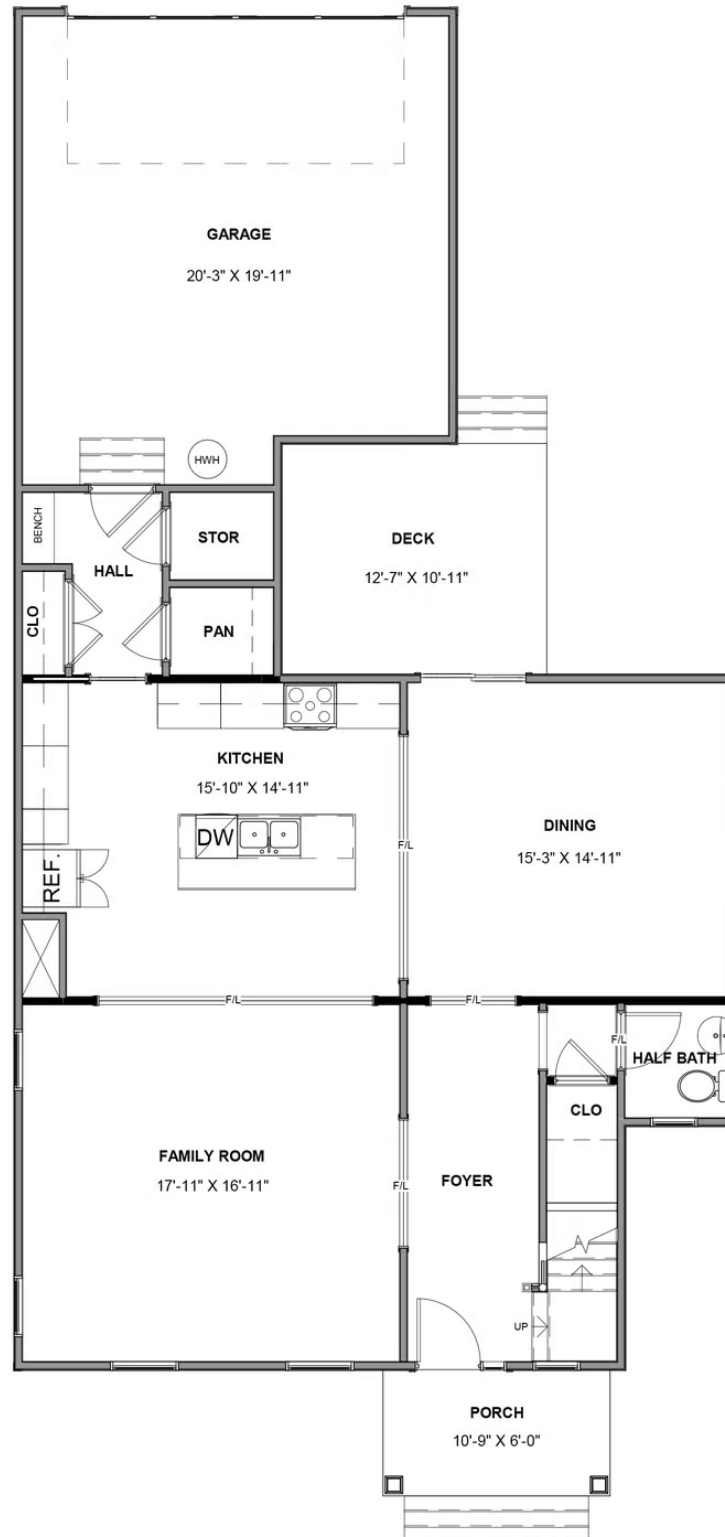


**Craftsman**



**Traditional**

FIRST FLOOR



SECOND FLOOR

