





# 101 Hopeton Alley

AT LAURADELL



-  2 Bedrooms
-  2.0 Bathrooms
-  1500 Square Feet
-  2 Car Garage

**\$509,900**



You'll never miss a step with the Newport, a one-level plan offering 2 bedrooms, 2 baths, a 2-car garage, and 1500 square feet of easy-breezy living. Bungalow comfort meets cape charm, starting with an inviting front porch ready to welcome friends, guests, and grandchildren alike. Entering the foyer, the aroma of home-baked goodness draws you past the front study and into an ambience of openness as kitchen and family room blend seamlessly into one. Just as relaxing is the primary suite, with its serenity primary bath and expanded walk-in closet. A second bedroom, full bath, and laundry ensure there's room enough for all.

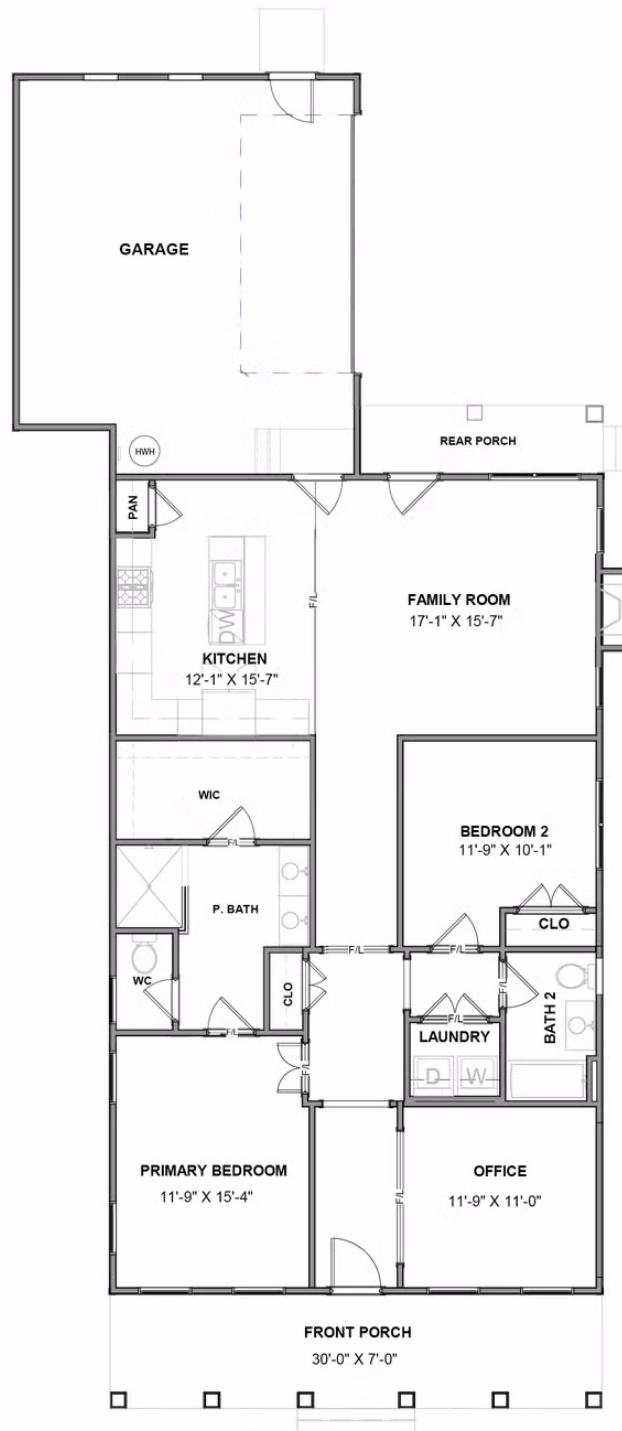
## Features of this Home

- Attached 2-car garage with accent windows
- Vaulted ceilings
- Serenity primary bath with enlarged shower and bench seat
- Expanded walk-in closet in primary bedroom
- Gas fireplace in family room with high definition wiring package above
- Additional recessed lighting in family room and primary bedroom
- Pre-wired for ceiling fans

[eagleofva.com](http://eagleofva.com)

# 101 Hopeton Alley

AT LAURADELL



eagleofva.com

This information is deemed reliable but not guaranteed. All details, dimensions, square footage, illustrations and pricing are approximate and may vary from actual plans and specifications. Contact an Eagle Sales Consultant for details. Current information as of 9th May 2024