




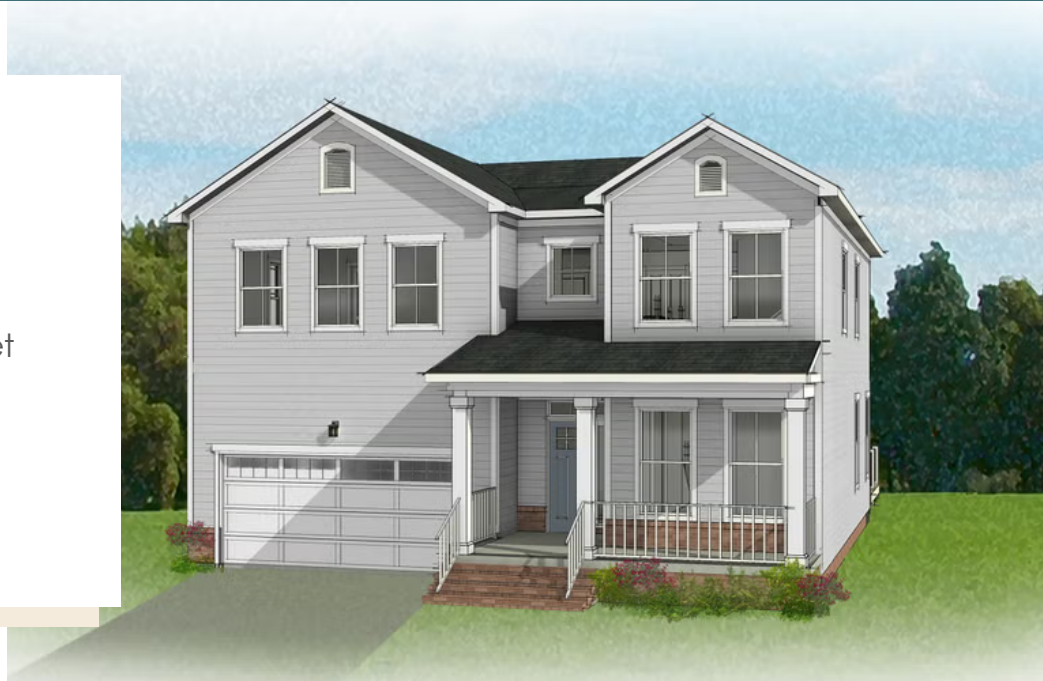


-  3 - 4 Bedrooms
-  3.5 Bathrooms
-  2,679 Square Feet
-  2 Car Garage
-  2 Levels



The Westfield is a new 2-story plan with 3+ bedrooms, 3.5 baths, a back deck, and over 2,600 square feet of flowing space that proves Mother Nature isn't the only one who knows the beauty of open concept living. A welcoming front porch sets the stage as you pass the front study and lose yourself in the sprawling comforts of effortless living. A magnificent expanse of kitchen, breakfast nook and family room become a seamless place of endless inspiration for both family moments and festive entertaining. An open, stairwell invites you to the second floor and its cavernous primary suite with double vanity bath and dual walk-in closets. Completing the second floor are 2 additional bedrooms with a full bath, a laundry room, and generous loft space that can be easily converted to a third bedroom if desired.

### Features of this Floorplan

- Den
- Spacious loft
- Primary bedroom suite with dual walk-in closets
- Multiple primary bath layouts
- Additional bedrooms all with walk-in closets, one with its own full bath
- Opportunity to add fourth bedroom in lieu of loft
- Option for Florida room
- Option for screened porch



Traditional

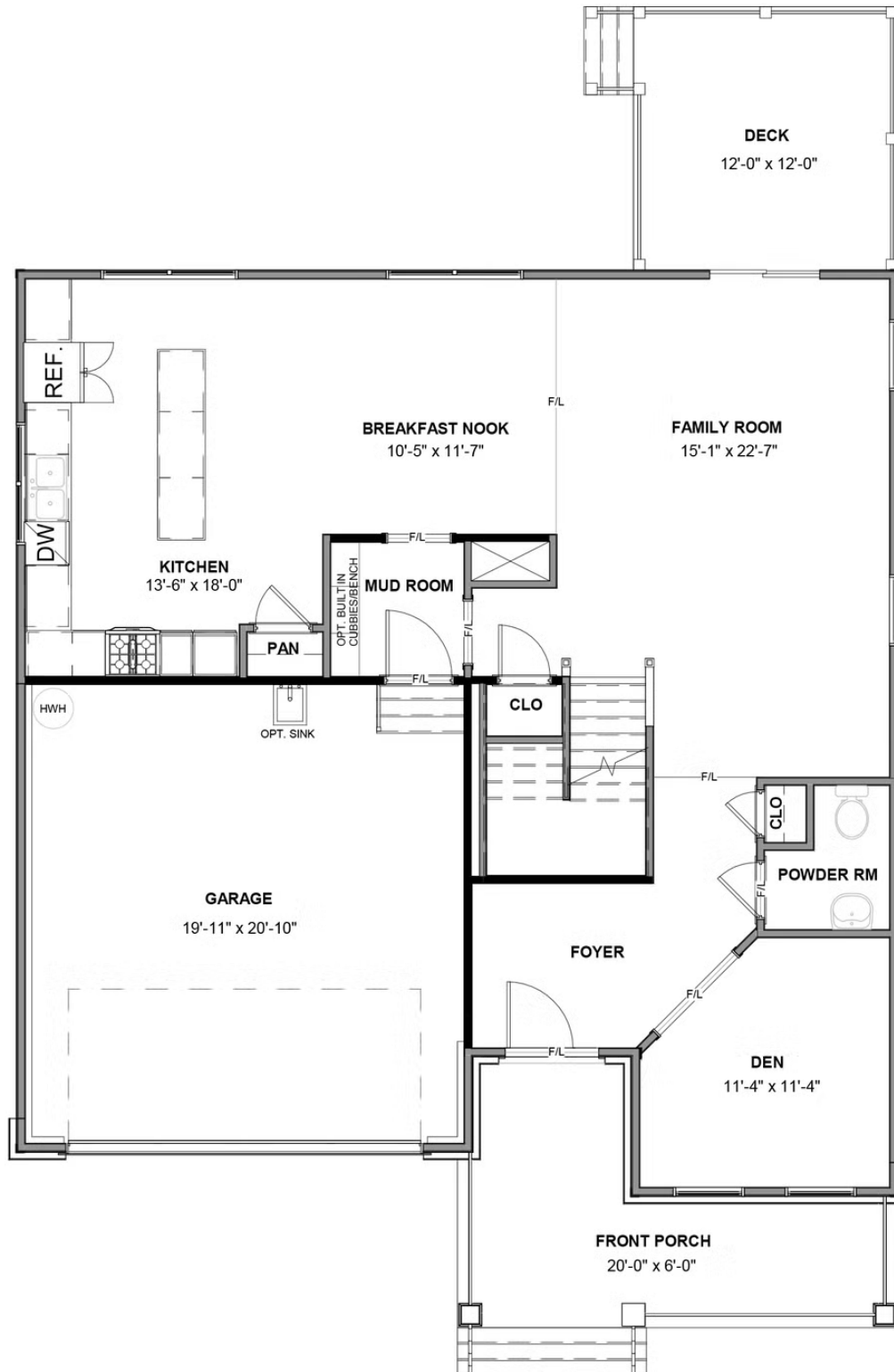


Craftsman



Arts & Crafts

## FIRST FLOOR



## SECOND FLOOR

