






-  3 Bedrooms
-  2.5 Bathrooms
-  2,140 Square Feet
-  2 Car Garage
-  2 Levels



As timeless as it is contemporary, the Manchester is a 2-story plan with 3 bedrooms, 2.5 baths, and over 2,100 square feet of head-turning curb appeal. Step inside the foyer and be swept away by free-flowing spaciousness that whisks you effortlessly from family room to breakfast nook and on into a beautiful kitchen ready for cooking up memories. The first floor primary suite with expansive bath and walk-in closet leaves nothing to spare. Upstairs offers a loft area, two additional bedrooms, a full bath, and ample opportunities to personalize with storage, and additional bedroom, or even a balcony.

### Features of this Floorplan

- First floor primary bedroom with multiple primary bath layouts and large walk-in closet
- Spacious loft with opportunity to make larger or turn part of it into a fourth bedroom
- Option for balcony
- Option for dual primary bedrooms

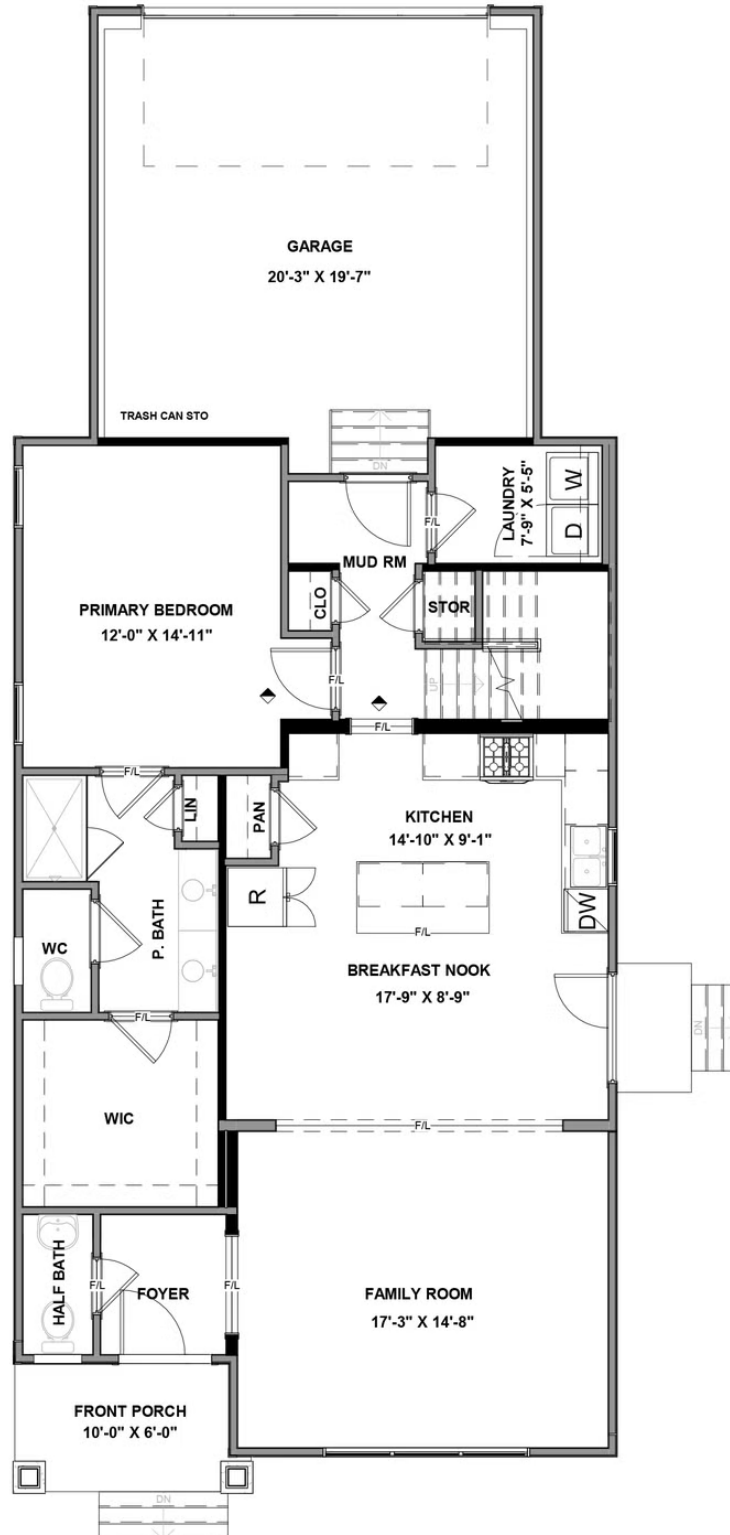


**Arts & Crafts**



**Craftsman**

## FIRST FLOOR



**SECOND FLOOR**

