






-  3 Bedrooms
-  2.5 Bathrooms
-  2,918 Square Feet
-  2 Car Garage
-  2 Levels



Think you've seen it all? Then you haven't seen Linden Terrace, a 2-story plan with 3 bedrooms, 2.5 baths, a 2-car garage, and 2,700 glorious square feet of pure home happiness. A front porch made for sipping lemonade and social graces welcomes you inside to a chef's dream kitchen offering a scenic vista overlooking both breakfast nook and family room. A formal dining room and home study lend sophistication and flexibility, while a secluded first floor primary suite with prodigious walk-in closet and dual-sink bath offer a quiet escape. Step downstairs to the terrace level where a rec room, full bath, and two additional bedrooms blend playfulness, with easygoing comfort and everyday livability—while a cavernous unfinished storage area is ready for whatever you can imagine.

Features of this Floorplan

- Main level primary bedroom
- Study
- Butler's pantry
- Formal dining room
- Terrace level with rec area and additional bedrooms
- Multiple primary bath configurations
- Option for screened porch
- Option for expanded rec room
- Option for Florida room



Traditional

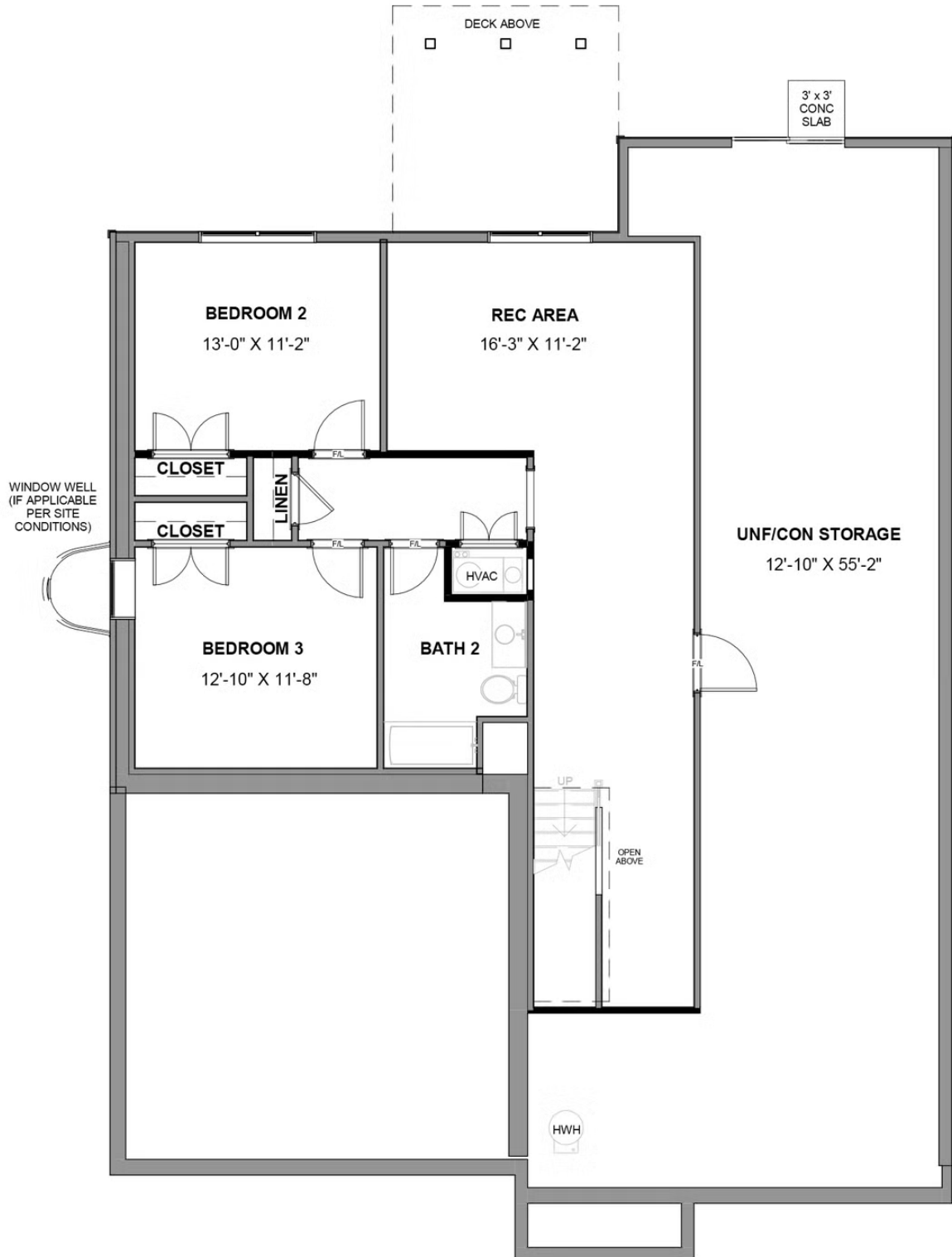


Craftsman



Folk Victorian

TERRACE LEVEL



This is a detailed floor plan of a house. The layout includes a large **Garage** (21'-1" x 20'-2") at the bottom left. To its right is a **Foyer** with a central staircase. The top left features a **Primary Bedroom** (14'-11" x 16'-2") with a 15000 - OPT. TRAY CEILING. Adjacent to it is a **Study** (11'-4" x 12'-0"). The top right contains a large **Family Room** (17'-3" x 15'-3"). The bottom right section includes a **Dining Room** (12'-10" x 14'-0") with a 15005 - OPT. TRAY CEILING, a **Kitchen** (13'-7" x 9'-11") with a refrigerator (REF), and a **Breakfast Nook** (17'-3" x 9'-5"). Other rooms include a **Master Bathroom**, a **Half Bath**, a **Butler's Pantry**, a **Pantry**, a **Laundry** room, and several closets (CLOSET, WIC, LIN). A **Deck** (12'-0" x 12'-0") is located at the top. A **Stoop** (9'-6" x 3'-0") is at the bottom entrance. The plan also shows a central staircase with 'UP' and 'DN' directions and various door swings.